

Phospho-Filamin A-S2152 Antibody Kit (AP0783 & A7896)

Catalog No.: RK05766

Basic Information

Observed MW

300kDa

Calculated MW

281kDa

Category

Primary antibody

Background

The protein encoded by this gene is an actin-binding protein that crosslinks actin filaments and links actin filaments to membrane glycoproteins. The encoded protein is involved in remodeling the cytoskeleton to effect changes in cell shape and migration. This protein interacts with integrins, transmembrane receptor complexes, and second messengers. Defects in this gene are a cause of several syndromes, including periventricular nodular heterotopias (PVNH1, PVNH4), otopalatodigital syndromes (OPD1, OPD2), frontometaphyseal dysplasia (FMD), Melnick-Needles syndrome (MNS), and X-linked congenital idiopathic intestinal pseudoobstruction (CIIPX). Two transcript variants encoding different isoforms have been found for this gene.

Component

Catalog No.	Product Name	Applications	Cross-Reactivity
AP0783	Phospho-Filamin A-S2152 Rabbit pAb	ELISA, WB	Human, Mouse, Rat
A7896	Filamin A Rabbit pAb	ELISA, WB, IHC-P	Human, Mouse, Rat

Recommended Dilutions

AP0783 WB 1:500 - 1:2000

A7896 WB 1:500 - 1:2000

For more information please visit
www.abclonal.com

Product Information

Source Rabbit
Isotype IgG

Purification
Affinity purification

Storage
Store at -20°C. Avoid freeze / thaw cycles.
Buffer: PBS with 0.01% thimerosal, 50% glycerol, pH7.3.

Immunogen Information

Gene ID 2316
Swiss Prot P21333

Immunogen

A synthetic phosphorylated peptide around S2152 of human Filamin A (NP_001104026.1).
A synthetic peptide corresponding to a sequence within amino acids 2500 to the C-terminus of human Filamin A (NP_001104026.1).

Synonyms

FLNA; ABP-280; ABPX; CSBS; CVD1; FLN; FLN-A; FLN1; FMD; MNS; NHBP; OPD; OPD1; OPD2; XLVD; XMVD; filamin-A

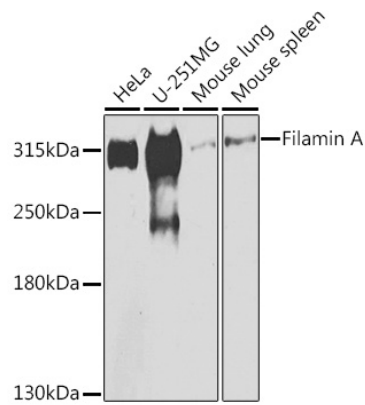
Contact

☎ | 400-999-6126

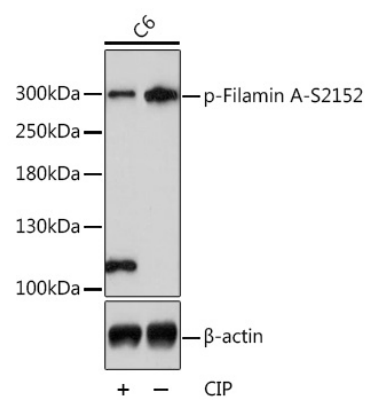
✉ | cn.market@abclonal.com.cn

🌐 | www.abclonal.com.cn

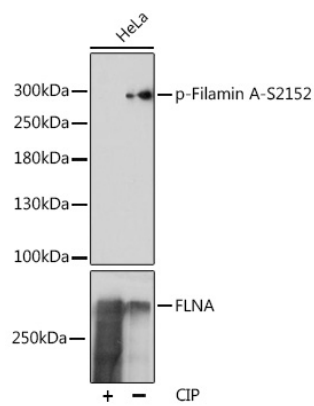
Validation Data



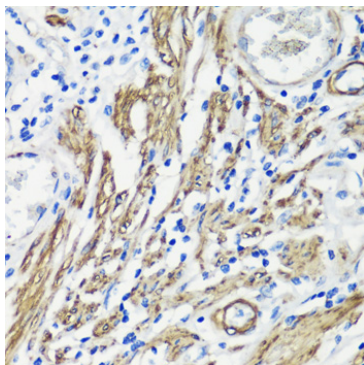
Western blot analysis of extracts of various cell lines, using Filamin A antibody (A7896) at 1:500 dilution. Secondary antibody: HRP Goat Anti-Rabbit IgG (H+L) (AS014) at 1:10000 dilution. Lysates/proteins: 25µg per lane. Blocking buffer: 3% nonfat dry milk in TBST. Detection: ECL Enhanced Kit (RM00021). Exposure time: 30s.



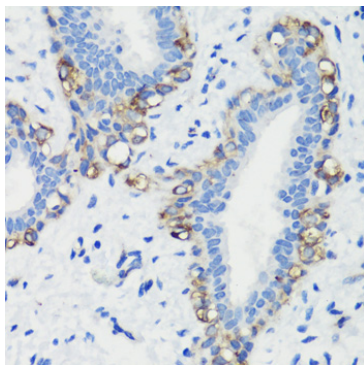
Western blot analysis of extracts of C6 cells, using Phospho-Filamin A-S2152 antibody (AP0783) at 1:1000 dilution. C6 cell lysate were treated by CIP (20ul CIP for each 400ul cell lysate) at 37°C for 1 hour. Secondary antibody: HRP Goat Anti-Rabbit IgG (H+L) (AS014) at 1:10000 dilution. Lysates/proteins: 25µg per lane. Blocking buffer: 3% BSA. Detection: ECL Enhanced Kit (RM00021). Exposure time: 30s.



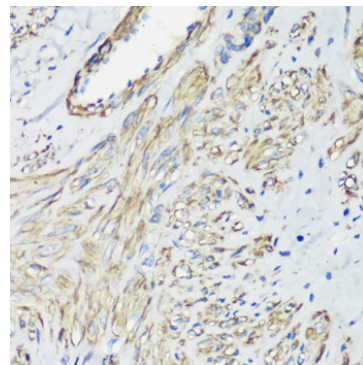
Western blot analysis of extracts of HeLa cells, using Phospho-Filamin A-S2152 pAb (AP0783) at 1:1000 dilution or Filamin A antibody (A7896). HeLa cell lysate were treated by CIP (20ul CIP for each 400ul cell lysate) at 37°C for 1 hour. Secondary antibody: HRP Goat Anti-Rabbit IgG (H+L) (AS014) at 1:10000 dilution. Lysates/proteins: 25µg per lane. Blocking buffer: 3% BSA. Detection: ECL Enhanced Kit (RM00021). Exposure time: 30s.



Immunohistochemistry analysis of paraffin-embedded human colon muscle using Filamin A antibody (A7896) at dilution of 1:100 (40x lens). Perform microwave antigen retrieval with 10 mM PBS buffer pH 7.2 before commencing with IHC staining protocol.



Immunohistochemistry analysis of paraffin-embedded human breast cancer using Filamin A antibody (A7896) at dilution of 1:100 (40x lens). Perform microwave antigen retrieval with 10 mM PBS buffer pH 7.2 before commencing with IHC staining protocol.



Immunohistochemistry analysis of paraffin-embedded human uterine cancer using Filamin A antibody (A7896) at dilution of 1:100 (40x lens). Perform microwave antigen retrieval with 10 mM PBS buffer pH 7.2 before commencing with IHC staining protocol.