

Phospho-PEA15-S104 Antibody kit

Catalog No.: RK05768

Basic Information

Observed MW

13kDa/15kDa

Calculated MW

15kDa

Category

Primary antibody

Recommended Dilutions

AP0788 WB 1:500 - 1:2000**A9956 WB** 1:500 - 1:2000For more information please visit
www.abclonal.com

Product Information

Source Rabbit
Isotype IgG**Purification**



Affinity purification

Storage

Store at -20°C. Avoid freeze / thaw cycles.

Buffer: PBS with 0.01% thimerosal, 50% glycerol, pH7.3.

Contact

 | 400-999-6126 | cn.market@abclonal.com.cn | www.abclonal.com.cn

Background

This gene encodes a death effector domain-containing protein that functions as a negative regulator of apoptosis. The encoded protein is an endogenous substrate for protein kinase C. This protein is also overexpressed in type 2 diabetes mellitus, where it may contribute to insulin resistance in glucose uptake. Alternative splicing results in multiple transcript variants.

Component

Catalog No.	Product Name	Applications	Cross-Reactivity
AP0788	Phospho-PEA15-S104 Rabbit pAb	ELISA, WB	Human, Mouse, Rat
A9956	PEA15 Rabbit pAb	ELISA, WB	Human, Mouse

Immunogen Information

Gene ID

8682

Swiss Prot

Q15121

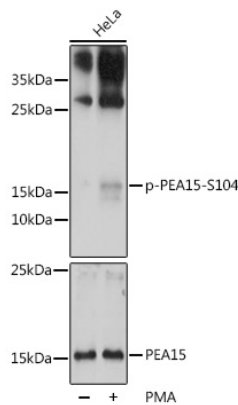
Immunogen

A synthetic phosphorylated peptide around S104 of human PEA15 (NP_003759.1). Recombinant fusion protein containing a sequence corresponding to amino acids 1-130 of human PEA15 (NP_003759.1).

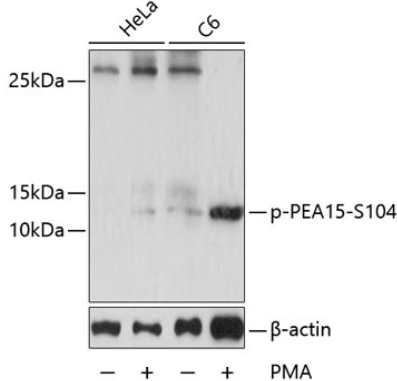
Synonyms

PEA15;HMAT1;HUMMAT1H;MAT1;MAT1H;PEA-15;PED

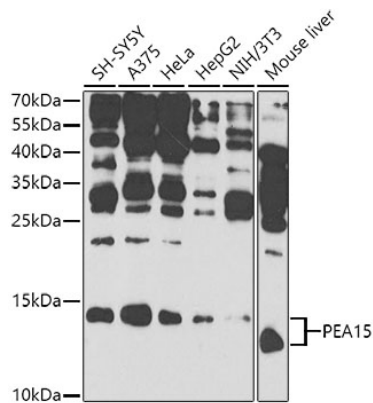
Validation Data



Western blot analysis of lysates from HeLa cells, using Phospho-PEA15-S104 Rabbit pAb (A9956).HeLa cells were treated by PMA/TPA (200nM) for 15 minutes after serum-starvation overnight. Secondary antibody: HRP Goat Anti-Rabbit IgG (H+L) (AS014) at 1:10000 dilution. Lysates/proteins: 25µg per lane. Blocking buffer: 3% BSA. Detection: ECL Basic Kit (RM00020). Exposure time: 90s.



Western blot analysis of lysates from HeLa and C6 cells, using Phospho-PEA15-S104 Rabbit pAb (AP0788) at 1:2000 dilution. HeLa cells were treated by PMA/TPA (200nM) for 15 minutes after serum-starvation overnight.C6 cells were treated by PMA/TPA (200nM) for 30 minutes after serum-starvation overnight. Secondary antibody: HRP Goat Anti-Rabbit IgG (H+L) (AS014) at 1:10000 dilution. Lysates/proteins: 25µg per lane. Blocking buffer: 3% BSA. Detection: ECL Basic Kit (RM00020). Exposure time: 10s.



Western blot analysis of extracts of various cell lines, using PEA15 antibody (A9956) at 1:1000 dilution. Secondary antibody: HRP Goat Anti-Rabbit IgG (H+L) (AS014) at 1:10000 dilution. Lysates/proteins: 25µg per lane. Blocking buffer: 3% nonfat dry milk in TBST. Detection: ECL Basic Kit (RM00020). Exposure time: 90s.