

Phospho-ERK1-T202/Y204 + ERK2-T185/Y187 Antibody Kit (AP1120 & A16686)

Catalog No.: RK05775

Basic Information

Observed MW

42kDa/44kDa

Calculated MW

Category

Primary antibody

Recommended Dilutions

AP1120 WB 1:500 - 1:2000

A16686 WB 1:500 - 1:1000

For more information please visit
www.abclonal.com

Product Information

Source Rabbit
Isotype IgG

Purification
Affinity purification

Storage
Store at -20°C. Avoid freeze / thaw cycles.
Buffer: PBS with 0.05% proclin300,50% glycerol,pH7.3.

Contact

☎ | 400-999-6126

✉ | cn.market@abclonal.com.cn

🌐 | www.abclonal.com.cn

Background

This gene encodes a member of the MAP kinase family. MAP kinases, also known as extracellular signal-regulated kinases (ERKs), act as an integration point for multiple biochemical signals, and are involved in a wide variety of cellular processes such as proliferation, differentiation, transcription regulation and development. The activation of this kinase requires its phosphorylation by upstream kinases. Upon activation, this kinase translocates to the nucleus of the stimulated cells, where it phosphorylates nuclear targets. One study also suggests that this protein acts as a transcriptional repressor independent of its kinase activity. The encoded protein has been identified as a moonlighting protein based on its ability to perform mechanistically distinct functions. Two alternatively spliced transcript variants encoding the same protein, but differing in the UTRs, have been reported for this gene. [provided by RefSeq, Jan 2014]

Component

Catalog No.	Product Name	Applications	Cross-Reactivity
AP1120	Phospho-ERK1-T202/Y204 + ERK2-T185/Y187 Rabbit pAb	ELISA,WB	Human, Mouse
A16686	ERK1 / ERK2 Rabbit pAb	ELISA,WB,IHC-P,IF/ICC	Human, Mouse, Rat

Immunogen Information

Gene ID 5594/ 5595
Swiss Prot P28482/P27361

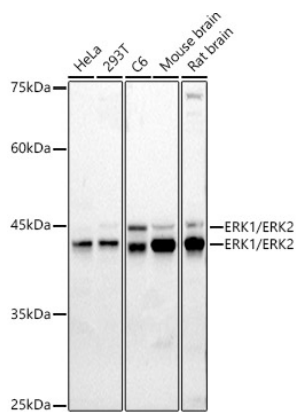
Immunogen

A synthetic phosphorylated peptide around T185/Y187 of human ERK2 (NP_002736.3).
A synthetic peptide corresponding to a sequence within amino acids 200-300 of human ERK1 / ERK2 (NP_620407.1/NP_002737.2).

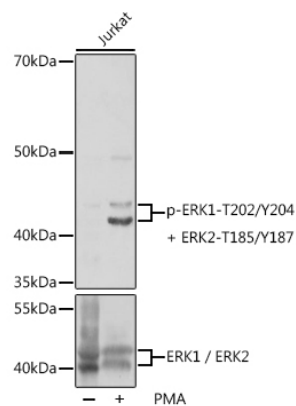
Synonyms

ERK;ERK-2;ERK2;ERT1;MAPK2;P42MAPK;PRKM1;PRKM2;p38;p40;p41;p41mapk;p42-MAPK;MAPK1

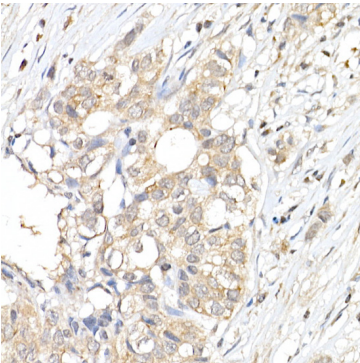
Validation Data



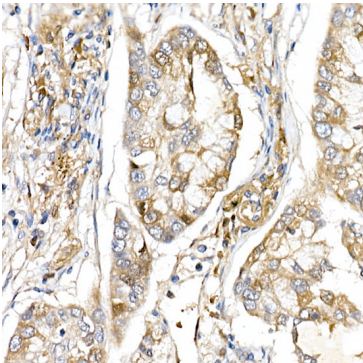
Western blot analysis of various lysates using ERK1 / ERK2 Rabbit pAb (A16686) at 1:1000 dilution.
Secondary antibody: HRP Goat Anti-Rabbit IgG (H+L) (AS014) at 1:10000 dilution.
Lysates/proteins: 25µg per lane.
Blocking buffer: 3% nonfat dry milk in TBST.
Detection: ECL Basic Kit (RM00020).
Exposure time: 90s.



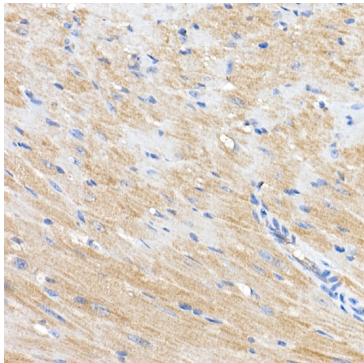
Western blot analysis of lysates from Jurkat cells, using Phospho-ERK1-T202/Y204 + ERK2-T185/Y187 pAb (AP1120) at 1:1000 dilution or ERK1 / ERK2 antibody (A16686). Jurkat cells were treated by PMA/TPA (200 nM) at 37°C for 10 minutes.
Secondary antibody: HRP Goat Anti-Rabbit IgG (H+L) (AS014) at 1:10000 dilution.
Lysates/proteins: 25µg per lane.
Blocking buffer: 3% BSA.
Detection: ECL Basic Kit (RM00020).
Exposure time: 10s.



Immunohistochemistry analysis of ERK1 / ERK2 in paraffin-embedded human breast cancer using ERK1 / ERK2 Rabbit pAb (A16686) at dilution of 1:50 (40x lens). Perform high pressure antigen retrieval with 10 mM citrate buffer pH 6.0 before commencing with IHC staining protocol.

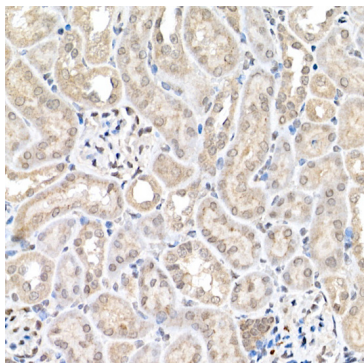


Immunohistochemistry analysis of ERK1 / ERK2 in paraffin-embedded human lung cancer using ERK1 / ERK2 Rabbit pAb (A16686) at dilution of 1:50 (40x lens). Perform high pressure antigen retrieval with 10 mM citrate buffer pH 6.0 before commencing with IHC staining protocol.

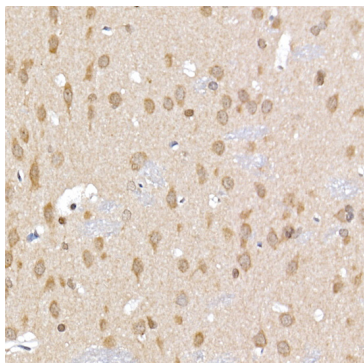


Immunohistochemistry analysis of ERK1 / ERK2 in paraffin-embedded mouse heart using ERK1 / ERK2 Rabbit pAb (A16686) at dilution of 1:50 (40x lens). Perform high pressure antigen retrieval with 10 mM citrate buffer pH 6.0 before commencing with IHC staining protocol.

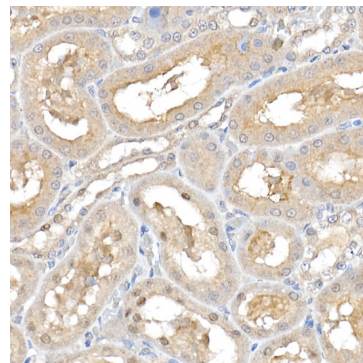
Validation Data



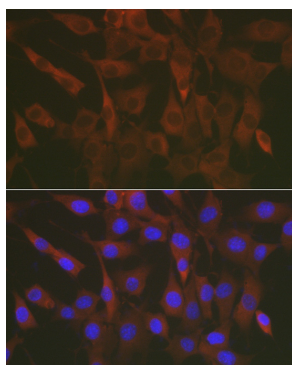
Immunohistochemistry analysis of ERK1 / ERK2 in paraffin-embedded mouse kidney using ERK1 / ERK2 Rabbit pAb (A16686) at dilution of 1:50 (40x lens). Perform high pressure antigen retrieval with 10 mM citrate buffer pH 6.0 before commencing with IHC staining protocol.



Immunohistochemistry analysis of ERK1 / ERK2 in paraffin-embedded rat brain using ERK1 / ERK2 Rabbit pAb (A16686) at dilution of 1:50 (40x lens). Perform high pressure antigen retrieval with 10 mM citrate buffer pH 6.0 before commencing with IHC staining protocol.



Immunohistochemistry analysis of ERK1 / ERK2 in paraffin-embedded rat kidney using ERK1 / ERK2 Rabbit pAb (A16686) at dilution of 1:50 (40x lens). Perform high pressure antigen retrieval with 10 mM citrate buffer pH 6.0 before commencing with IHC staining protocol.



Immunofluorescence analysis of NIH/3T3 cells using ERK1 / ERK2 Rabbit pAb (A16686) at dilution of 1:50 (40x lens). Secondary antibody: Cy3 Goat Anti-Rabbit IgG (H+L) (AS007) at 1:500 dilution. Blue: DAPI for nuclear staining.