

Phospho-NF-kB p65-S536 Antibody kit

Catalog No.: RK05776

Basic Information

Observed MW

65kDa/

Calculated MW

60kDa

Category

Primary antibody

Recommended Dilutions

AP0124 WB 1:2000 - 1:10000**A16271 WB** 1:500 - 1:2000For more information please visit
www.abclonal.com

Product Information

Source Rabbit
Isotype IgG**Purification**



Affinity purification

Storage

Store at -20°C. Avoid freeze / thaw cycles.

Buffer: PBS with 0.05% proclin300,50% glycerol,pH7.3.

Contact

 | 400-999-6126 | cn.market@abclonal.com.cn | www.abclonal.com.cn

Background

NF-kappa-B is a ubiquitous transcription factor involved in several biological processes. It is held in the cytoplasm in an inactive state by specific inhibitors. Upon degradation of the inhibitor, NF-kappa-B moves to the nucleus and activates transcription of specific genes. NF-kappa-B is composed of NFKB1 or NFKB2 bound to either REL, RELA, or RELB. The most abundant form of NF-kappa-B is NFKB1 complexed with the product of this gene, RELA. Four transcript variants encoding different isoforms have been found for this gene.

Component

Catalog No.	Product Name	Applications	Cross-Reactivity
AP0124	Phospho-NF-kB p65/RelA-S536 Rabbit pAb	ELISA,WB,IF/ICC	Human, Mouse, Rat
A16271	NF-kB p65/RelA Rabbit pAb	ELISA,WB,IF/ICC	Human, Mouse, Rat

Immunogen Information

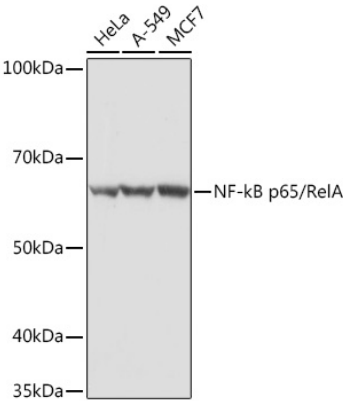
Gene ID
5970**Swiss Prot**
Q04206**Immunogen**

A synthetic phosphorylated peptide around S536 of human RelA (NP_068810.3).
A synthetic peptide corresponding to a sequence within amino acids 100-200 of human NF-kB p65/RelA (NP_068810.3).

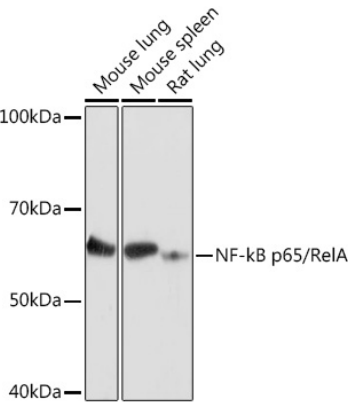
Synonyms

NFKB3;p65;NF-kB p65;RELA;CMCU

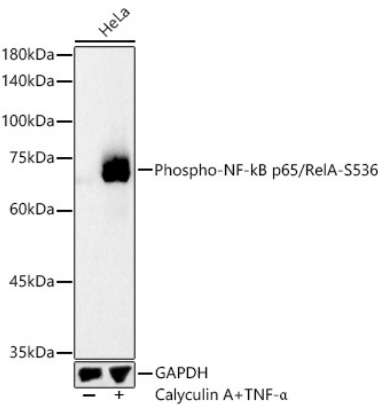
Validation Data



Western blot analysis of various lysates using NF-kB p65/RelA Rabbit pAb (A16271) at 1:500 dilution.
Secondary antibody: HRP Goat Anti-Rabbit IgG (H+L) (AS014) at 1:10000 dilution.
Lysates/proteins: 25µg per lane.
Blocking buffer: 3% nonfat dry milk in TBST.
Detection: ECL Basic Kit (RM00020).
Exposure time: 3s.

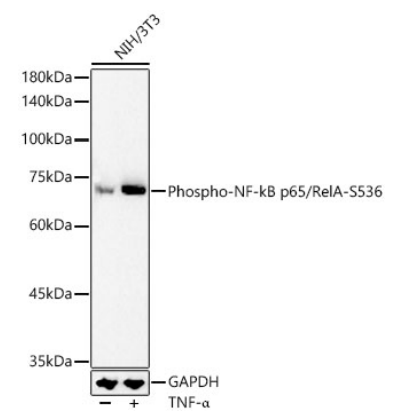


Western blot analysis of various lysates using NF-kB p65/RelA Rabbit pAb (A16271) at 1:500 dilution.
Secondary antibody: HRP Goat Anti-Rabbit IgG (H+L) (AS014) at 1:10000 dilution.
Lysates/proteins: 25µg per lane.
Blocking buffer: 3% nonfat dry milk in TBST.
Detection: ECL Basic Kit (RM00020).
Exposure time: 10s.

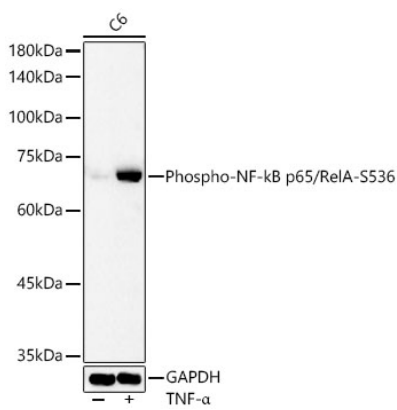


Western blot analysis of lysates from HeLa cells using Phospho-NF-kB p65/RelA-S536 Rabbit pAb (AP0124) at 1:10000 dilution. HeLa cells were treated by TNF-α (50 ng/ml) and Calyculin A (50 nM) at 37°C for 10 minutes.
Secondary antibody:HRP Goat Anti-Rabbit IgG (H+L)(AS014) at 1:10000 dilution.
Lysates/proteins: 25 µg per lane.
Blocking buffer: 3% nonfat dry milk in TBST.
Detection:ECL Basic Kit (RM00020).
Exposuretime: 30s.

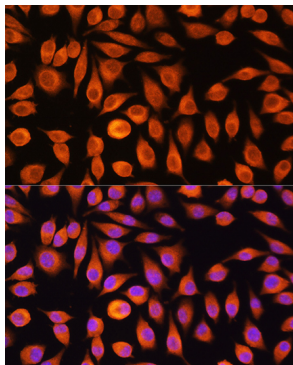
Validation Data



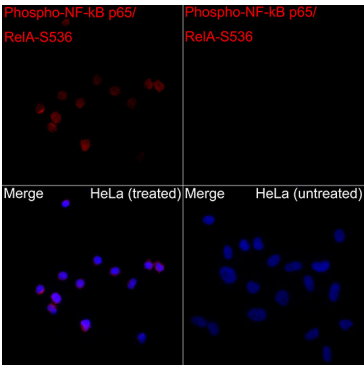
Western blot analysis of lysates from NIH/3T3 cells using Phospho-NF-kB p65/RelA-S536 Rabbit pAb (AP0124) at 1:10000 dilution. NIH/3T3 cells were treated by TNF- α (10 ng/ml) at 37°C for 30 minutes. Secondary antibody:HRP Goat Anti-Rabbit IgG (H+L)(AS014) at 1:10000 dilution. Lysates/proteins: 25 μ g per lane. Blocking buffer: 3% nonfat dry milk in TBST. Detection:ECL Basic Kit (RM00020). Exposure time: 90s.



Western blot analysis of lysates from C6 cells using Phospho-NF-kB p65/RelA-S536 Rabbit pAb (AP0124) at 1:10000 dilution. C6 cells were treated by TNF- α (50 ng/ml) at 37°C for 30 minutes. Secondary antibody:HRP Goat Anti-Rabbit IgG (H+L)(AS014) at 1:10000 dilution. Lysates/proteins: 25 μ g per lane. Blocking buffer: 3% nonfat dry milk in TBST. Detection:ECL Basic Kit (RM00020). Exposure time: 90s.



Immunofluorescence analysis of L929 cells using NF-kB p65/RelA Rabbit pAb (A16271) at dilution of 1:100. Secondary antibody: Cy3 Goat Anti-Rabbit IgG (H+L) (AS007) at 1:500 dilution. Blue: DAPI for nuclear staining.



Immunofluorescence analysis of HeLa TNF α + CA and HeLa cells using Phospho-NF-kB p65/RelA-S536 Rabbit pAb (AP0124) at dilution of 1:50 (40x lens). Secondary antibody: Cy3 Goat Anti-Rabbit IgG (H+L) (AS007) at 1:500 dilution. Blue: DAPI for nuclear staining.