

Phospho-HP1 gamma/CBX3-S83 Antibody Kit (AP0801 & A2248)

Catalog No.: RK05782

Basic Information

Observed MW

22kDa

Calculated MW

21kDa

Category

Primary antibody

Recommended Dilutions

AP0801 WB 1:500 - 1:1000

A2248 WB 1:500 - 1:1000

For more information please visit
www.abclonal.com

Product Information

Source Rabbit
Isotype IgG

Purification

Affinity purification

Storage

Store at -20°C. Avoid freeze / thaw cycles.
Buffer: PBS with 0.01% thimerosal, 50% glycerol, pH7.3.

Contact

☎ | 400-999-6126

✉ | cn.market@abclonal.com.cn

🌐 | www.abclonal.com.cn

Background

At the nuclear envelope, the nuclear lamina and heterochromatin are adjacent to the inner nuclear membrane. The protein encoded by this gene binds DNA and is a component of heterochromatin. This protein also can bind lamin B receptor, an integral membrane protein found in the inner nuclear membrane. The dual binding functions of the encoded protein may explain the association of heterochromatin with the inner nuclear membrane. This protein binds histone H3 tails methylated at Lys-9 sites. This protein is also recruited to sites of ultraviolet-induced DNA damage and double-strand breaks. Two transcript variants encoding the same protein but differing in the 5' UTR, have been found for this gene.

Component

Catalog No.	Product Name	Applications	Cross-Reactivity
AP0801	Phospho-HP1 gamma/CBX3-S83 Rabbit pAb	ELISA, WB	Human, Mouse
A2248	[KO Validated] HP1 gamma/CBX3 Rabbit pAb	ELISA, WB, IHC-P, IF/ICC, IP	Human, Mouse, Rat

Immunogen Information

Gene ID
11335

Swiss Prot
Q13185

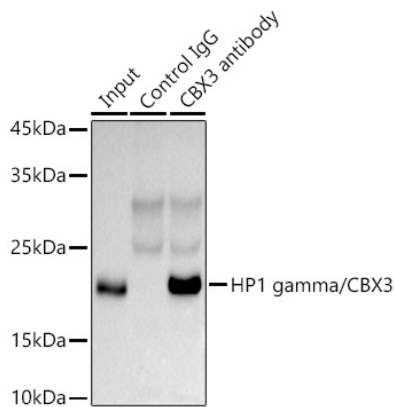
Immunogen

A synthetic phosphorylated peptide around S83 of human HP1 gamma/CBX3 (NP_009207.2). Recombinant fusion protein containing a sequence corresponding to amino acids 1-183 of human HP1 gamma/HP1 gamma/CBX3 (NP_009207.2).

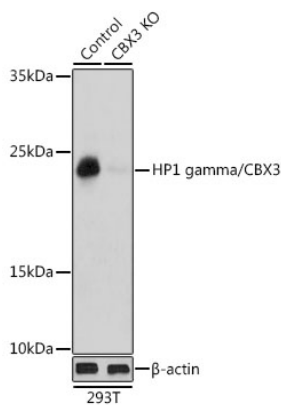
Synonyms

CBX3; HECH; HP1-GAMMA; HP1Hs-gamma

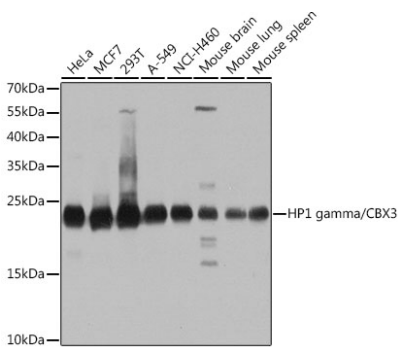
Validation Data



Immunoprecipitation analysis of 300 µg extracts of HeLa cells using 3 µg HP1 gamma/CBX3 antibody (A2248). Western blot was performed from the immunoprecipitate using HP1 gamma/CBX3 antibody (A2248) at a dilution of 1:1000.

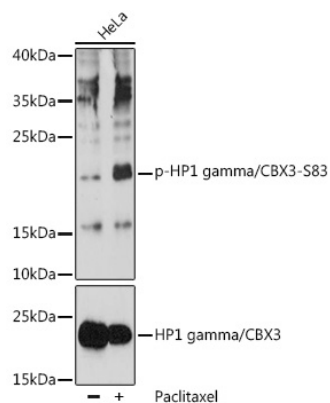


Western blot analysis of lysates from wild type (WT) and HP1 gamma/HP1 gamma/CBX3 knockout (KO) 293T cells, using [KO Validated] HP1 gamma/CBX3 Rabbit pAb (A2248) at 1:1000 dilution. Secondary antibody: HRP Goat Anti-Rabbit IgG (H+L) (AS014) at 1:10000 dilution. Lysates/proteins: 25µg per lane. Blocking buffer: 3% nonfat dry milk in TBST. Detection: ECL Basic Kit (RM00020). Exposure time: 1s.



Western blot analysis of various lysates using [KO Validated] HP1 gamma/CBX3 Rabbit pAb (A2248) at 1:1000 dilution. Secondary antibody: HRP Goat Anti-Rabbit IgG (H+L) (AS014) at 1:10000 dilution. Lysates/proteins: 25µg per lane. Blocking buffer: 3% nonfat dry milk in TBST. Detection: ECL Basic Kit (RM00020). Exposure time: 5s.

Validation Data



Western blot analysis of lysates from HeLa cells, using Phospho-HP1 gamma/CBX3-S83 pAb (AP0801) at 1:1000 dilution or HP1 gamma/CBX3 antibody (A2248). HeLa cells were treated by Paclitaxel (100 nM/mL) at 37°C for 20 hours.

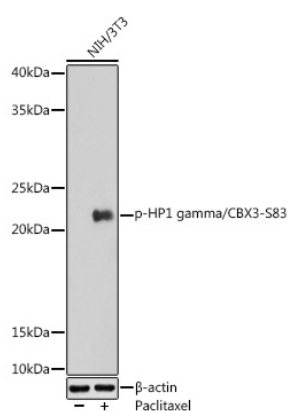
Secondary antibody: HRP Goat Anti-Rabbit IgG (H+L) (AS014) at 1:10000 dilution.

Lysates/proteins: 25µg per lane.

Blocking buffer: 3% BSA.

Detection: ECL Basic Kit (RM00020).

Exposure time: 60s.



Western blot analysis of lysates from NIH/3T3 cells, using Phospho-HP1 gamma/CBX3-S83 Rabbit pAb (AP0801) at 1:1000 dilution. NIH/3T3 cells were treated by Paclitaxel (100 nM) at 37°C for 20 hours.

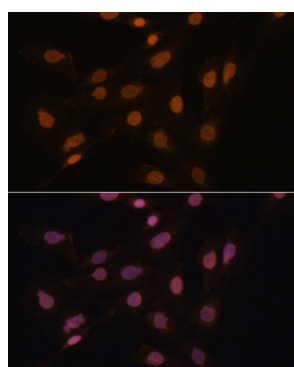
Secondary antibody: HRP Goat Anti-Rabbit IgG (H+L) (AS014) at 1:10000 dilution.

Lysates/proteins: 25µg per lane.

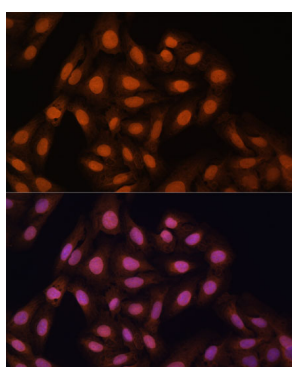
Blocking buffer: 3% nonfat dry milk in TBST.

Detection: ECL Enhanced Kit (RM00021).

Exposure time: 180s.



Immunofluorescence analysis of C6 cells using [KO Validated] HP1 gamma/CBX3 Rabbit pAb (A2248) at dilution of 1:100. Secondary antibody: Cy3 Goat Anti-Rabbit IgG (H+L) (AS007) at 1:500 dilution. Blue: DAPI for nuclear staining.



Immunofluorescence analysis of U-2 OS cells using [KO Validated] HP1 gamma/CBX3 Rabbit pAb (A2248) at dilution of 1:100. Secondary antibody: Cy3 Goat Anti-Rabbit IgG (H+L) (AS007) at 1:500 dilution. Blue: DAPI for nuclear staining.