

Phospho-Chk1-S345 Antibody kit (AP0578 & A7653)

Catalog No.: RK05789

Basic Information

Observed MW

56kDa

Calculated MW

54kDa

Category

Primary antibody

Recommended Dilutions

AP0578 WB 1:100 - 1:500**A7653 WB** 1:500 - 1:1000For more information please visit
www.abclonal.com


Product Information

Source Rabbit
Isotype IgG**Purification**

Affinity purification

StorageStore at -20°C. Avoid freeze / thaw cycles.
Buffer: PBS with 0.01% thimerosal, 50% glycerol, pH7.3.

Contact

 | 400-999-6126 | cn.market@abclonal.com.cn | www.abclonal.com.cn

Background

The protein encoded by this gene belongs to the Ser/Thr protein kinase family. It is required for checkpoint mediated cell cycle arrest in response to DNA damage or the presence of unreplicated DNA. This protein acts to integrate signals from ATM and ATR, two cell cycle proteins involved in DNA damage responses, that also associate with chromatin in meiotic prophase I. Phosphorylation of CDC25A protein phosphatase by this protein is required for cells to delay cell cycle progression in response to double-strand DNA breaks. Several alternatively spliced transcript variants have been found for this gene.

Component

Catalog No.	Product Name	Applications	Cross-Reactivity
AP0578	Phospho-Chk1-S345 Rabbit pAb	ELISA, WB	Human, Mouse, Rat
A7653	Chk1 Rabbit pAb	ELISA, WB, IHC-P, IF/ICC	Human, Mouse, Rat

Immunogen Information

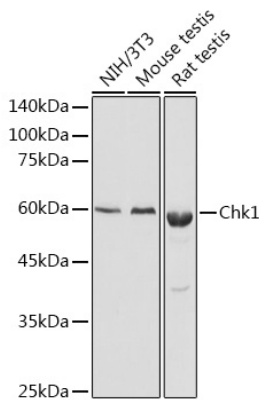
Gene ID
1111**Swiss Prot**
O14757**Immunogen**

A synthetic phosphorylated peptide around S345 of human Chk1 (NP_001265.2).
Recombinant fusion protein containing a sequence corresponding to amino acids 148-307 of Chk1 (NP_001265.2).

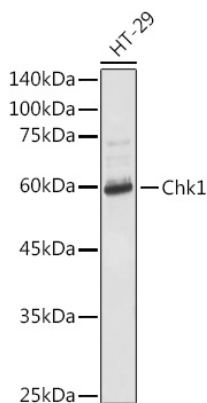
Synonyms

CHEK1;CHK1

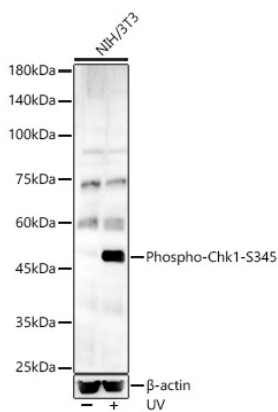
Validation Data



Western blot analysis of extracts of various cell lines, using Chk1 antibody (A7653) at 1:1000 dilution.
Secondary antibody: HRP Goat Anti-Rabbit IgG (H+L) (AS014) at 1:10000 dilution.
Lysates/proteins: 25µg per lane.
Blocking buffer: 3% nonfat dry milk in TBST.
Detection: ECL Basic Kit (RM00020).
Exposure time: 1s.

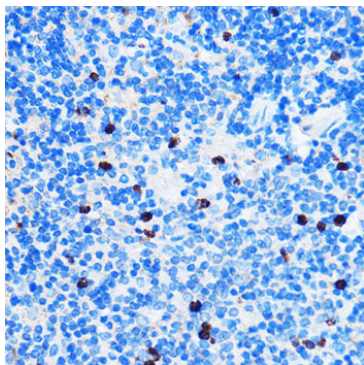


Western blot analysis of extracts of HT-29 cells, using Chk1 antibody (A7653) at 1:1000 dilution.
Secondary antibody: HRP Goat Anti-Rabbit IgG (H+L) (AS014) at 1:10000 dilution.
Lysates/proteins: 25µg per lane.
Blocking buffer: 3% nonfat dry milk in TBST.
Detection: ECL Basic Kit (RM00020).
Exposure time: 1s.

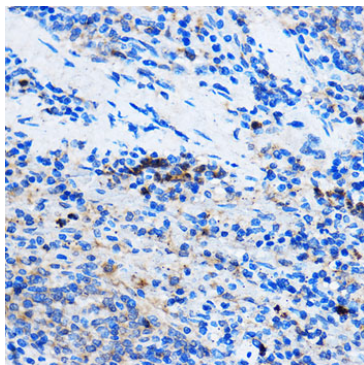


Western blot analysis of NIH/3T3, using Phospho-Chk1-S345 Rabbit pAb (AP0578) at 1:500 dilution. NIH/3T3 cells were treated by UV at room temperature for 15-30 minutes.
Secondary antibody: HRP Goat Anti-Rabbit IgG (H+L) (AS014) at 1:10000 dilution.
Lysates/proteins: 25µg per lane.
Blocking buffer: 3% nonfat dry milk in TBST.
Detection: ECL Basic Kit (RM00020).
Exposure time: 180s.

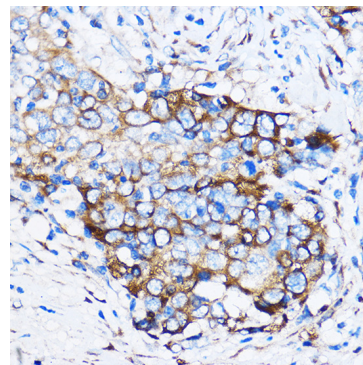
Validation Data



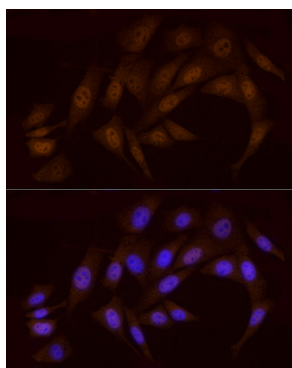
Immunohistochemistry analysis of paraffin-embedded Mouse spleen using Chk1 Rabbit pAb (A7653) at dilution of 1:50 (40x lens). Perform microwave antigen retrieval with 10 mM PBS buffer pH 7.2 before commencing with IHC staining protocol.



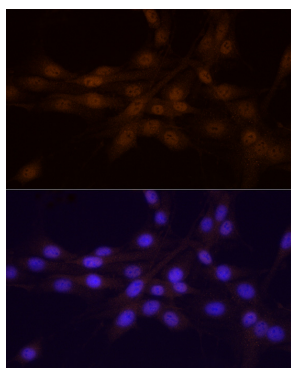
Immunohistochemistry analysis of paraffin-embedded Rat spleen using Chk1 Rabbit pAb (A7653) at dilution of 1:50 (40x lens). Perform microwave antigen retrieval with 10 mM PBS buffer pH 7.2 before commencing with IHC staining protocol.



Immunohistochemistry analysis of paraffin-embedded Human esophageal cancer using Chk1 Rabbit pAb (A7653) at dilution of 1:50 (40x lens). Perform microwave antigen retrieval with 10 mM PBS buffer pH 7.2 before commencing with IHC staining protocol.



Immunofluorescence analysis of NIH/3T3 cells using Chk1 Rabbit pAb (A7653) at dilution of 1:20 (40x lens). Blue: DAPI for nuclear staining.



Immunofluorescence analysis of PC-12 cells using Chk1 Rabbit pAb (A7653) at dilution of 1:20 (40x lens). Blue: DAPI for nuclear staining.