

Phospho-ABL1-Y245 Antibody kit

Catalog No.: RK05795

Basic Information

Observed MW

124kDa

Calculated MW

123kDa

Category

Primary antibody

Recommended Dilutions

AP0001 WB 1:500 - 1:2000

A0282 WB 1:100 - 1:500

For more information please visit
www.abclonal.com

Product Information

Source Rabbit
Isotype IgG

Purification
Affinity purification

Storage
Store at -20°C. Avoid freeze / thaw cycles.
Buffer: PBS with 0.01% thimerosal, 50% glycerol, pH7.3.

Contact

☎ | 400-999-6126

✉ | cn.market@abclonal.com.cn

🌐 | www.abclonal.com.cn

Background

This gene is a protooncogene that encodes a protein tyrosine kinase involved in a variety of cellular processes, including cell division, adhesion, differentiation, and response to stress. The activity of the protein is negatively regulated by its SH3 domain, whereby deletion of the region encoding this domain results in an oncogene. The ubiquitously expressed protein has DNA-binding activity that is regulated by CDC2-mediated phosphorylation, suggesting a cell cycle function. This gene has been found fused to a variety of translocation partner genes in various leukemias, most notably the t(9;22) translocation that results in a fusion with the 5' end of the breakpoint cluster region gene (BCR; MIM:151410). Alternative splicing of this gene results in two transcript variants, which contain alternative first exons that are spliced to the remaining common exons.

Component

Catalog No.	Product Name	Applications	Cross-Reactivity
AP0001	Phospho-c-Abl-Y245 Rabbit pAb	ELISA, WB, IHC-P	Human, Mouse, Rat
A0282	c-Abl Rabbit pAb	ELISA, WB, IHC-P, IF/ICC	Human, Mouse, Rat

Immunogen Information

Gene ID 25
Swiss Prot P00519

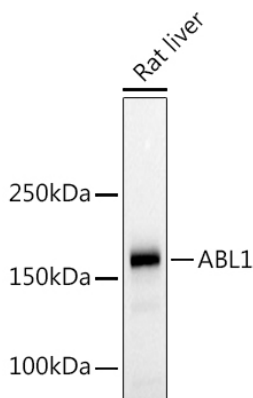
Immunogen

A synthetic phosphorylated peptide around Y245 of human ABL1 (NP_005148.2). Recombinant fusion protein containing a sequence corresponding to amino acids 1000-1130 of human c-Abl (NP_005148.2).

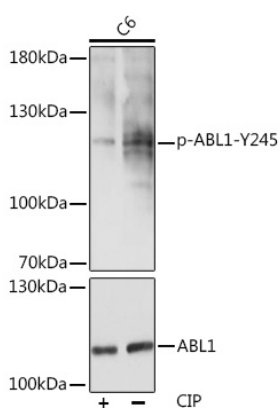
Synonyms

ABL; JTK7; p150; c-ABL; v-abl; CHDSKM; c-ABL1; ABL1; c-Abl; bcr/abl

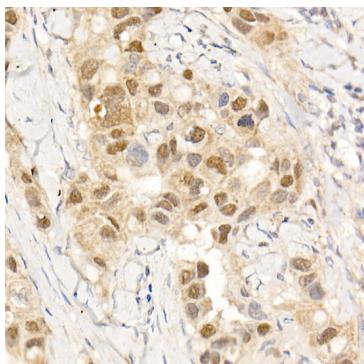
Validation Data



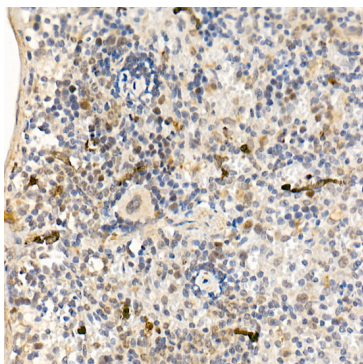
Western blot analysis of extracts of Rat liver, using c-Abl Rabbit pAb (A0282) at 1:500 dilution.
Secondary antibody: HRP Goat Anti-Rabbit IgG (H+L) (AS014) at 1:10000 dilution.
Lysates/proteins: 25µg per lane.
Blocking buffer: 3% nonfat dry milk in TBST.
Detection: ECL Basic Kit (RM00020).
Exposure time: 180s.



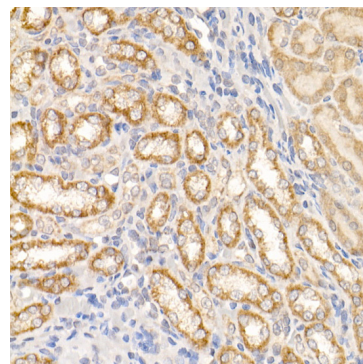
Western blot analysis of extracts of C6 cells, using Phospho-c-Abl-Y245 pAb (AP0001) at 1:1000 dilution or ABL1 antibody (A0282). C6 cells were treated by CIP(20uL/400ul) at 37°C for 1 hour.
Secondary antibody: HRP Goat Anti-Rabbit IgG (H+L) (AS014) at 1:10000 dilution.
Lysates/proteins: 25µg per lane.
Blocking buffer: 3% BSA.
Detection: ECL Basic Kit (RM00020).
Exposure time: 3S.



Immunohistochemistry analysis of paraffin-embedded human breast cancer using c-Abl Rabbit pAb (A0282) at dilution of 1:20 (40x lens). Perform high pressure antigen retrieval with 10 mM citrate buffer pH 6.0 before commencing with IHC staining protocol.

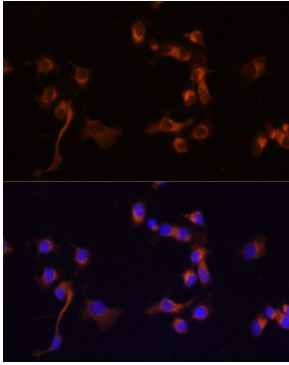


Immunohistochemistry analysis of paraffin-embedded mouse spleen using c-Abl Rabbit pAb (A0282) at dilution of 1:20 (40x lens). Perform high pressure antigen retrieval with 10 mM citrate buffer pH 6.0 before commencing with IHC staining protocol.

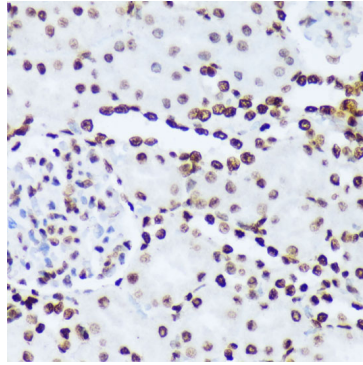


Immunohistochemistry analysis of paraffin-embedded rat kidney using c-Abl Rabbit pAb (A0282) at dilution of 1:20 (40x lens). Perform high pressure antigen retrieval with 10 mM citrate buffer pH 6.0 before commencing with IHC staining protocol.

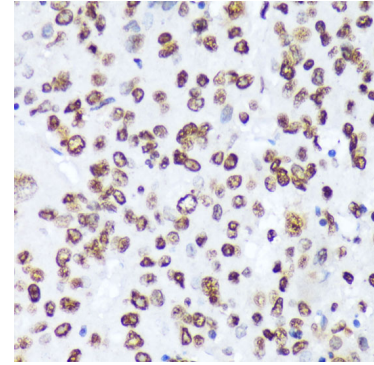
Validation Data



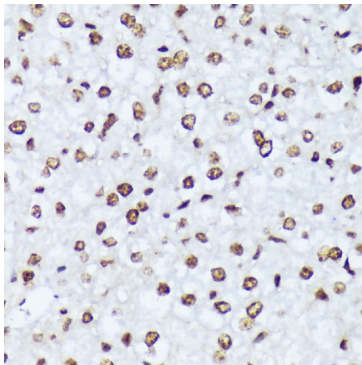
Immunofluorescence analysis of A431 cells using c-Abl antibody (A0282) at dilution of 1:100 (40x lens). Blue: DAPI for nuclear staining.



Immunohistochemistry analysis of paraffin-embedded rat kidney using Phospho-c-Abl-Y245 antibody (AP0001) at dilution of 1:100 (40x lens). Perform microwave antigen retrieval with 10 mM Tris/EDTA buffer pH 9.0 before commencing with IHC staining protocol.



Immunohistochemistry analysis of paraffin-embedded human liver cancer using Phospho-c-Abl-Y245 antibody (AP0001) at dilution of 1:100 (40x lens). Perform microwave antigen retrieval with 10 mM Tris/EDTA buffer pH 9.0 before commencing with IHC staining protocol.



Immunohistochemistry analysis of paraffin-embedded mouse liver using Phospho-c-Abl-Y245 antibody (AP0001) at dilution of 1:100 (40x lens). Perform microwave antigen retrieval with 10 mM Tris/EDTA buffer pH 9.0 before commencing with IHC staining protocol.