

# Phospho-MAP2K1-S217 Antibody kit

**Catalog No.: RK05801**

## Basic Information

**Observed MW**

43kDa

**Calculated MW**

43kDa

**Category**

Primary antibody

## Recommended Dilutions

**AP0062 WB** 1:500 - 1:2000**A12687 WB** 1:1000 - 1:3000For more information please visit  
[www.abclonal.com](http://www.abclonal.com)

## Product Information

**Source** Rabbit  
**Isotype** IgG**Purification**

Affinity purification

**Storage**

Store at -20°C. Avoid freeze / thaw cycles.

Buffer: PBS with 0.02% sodium azide, 50% glycerol, pH7.3.

## Contact

 | 400-999-6126 | [cn.market@abclonal.com.cn](mailto:cn.market@abclonal.com.cn) | [www.abclonal.com.cn](http://www.abclonal.com.cn)

## Background

The protein encoded by this gene is a member of the dual specificity protein kinase family, which acts as a mitogen-activated protein (MAP) kinase kinase. MAP kinases, also known as extracellular signal-regulated kinases (ERKs), act as an integration point for multiple biochemical signals. This protein kinase lies upstream of MAP kinases and stimulates the enzymatic activity of MAP kinases upon wide variety of extra- and intracellular signals. As an essential component of MAP kinase signal transduction pathway, this kinase is involved in many cellular processes such as proliferation, differentiation, transcription regulation and development.

## Component

Catalog No.	Product Name	Applications	Cross-Reactivity
AP0062	Phospho-MEK1-S217 Rabbit pAb	ELISA, WB	Human, Mouse, Rat
A12687	[KO Validated] MEK1 Rabbit pAb	ELISA, WB, IHC-P	Human, Mouse, Rat

## Immunogen Information

**Gene ID**

5604

**Swiss Prot**

Q02750

**Immunogen**

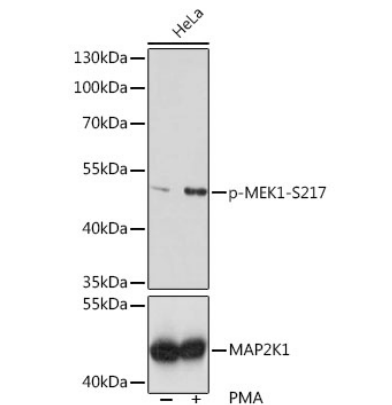
A synthetic phosphorylated peptide around S217 of human MEK1 (NP\_002746.1).

A synthetic peptide corresponding to a sequence within amino acids 1-100 of human MEK1 (NP\_002746.1).

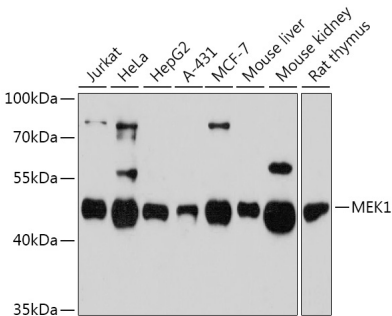
**Synonyms**

CFC3; MAPKK1; MEK1; MKK1; PRKMK1; MAP2K1

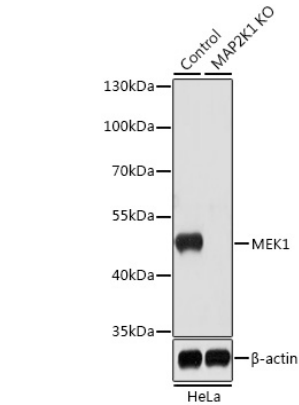
Validation Data



Western blot analysis of extracts of HeLa cells, using Phospho-MEK1-S217 pAb (AP0062) at 1:1000 dilution or MEK1 antibody (A12687). HeLa cells were treated by PMA/TPA (200 nM) at 37°C for 15 minutes after serum-starvation overnight.  
Secondary antibody: HRP Goat Anti-Rabbit IgG (H+L) (AS014) at 1:10000 dilution.  
Lysates/proteins: 25µg per lane.  
Blocking buffer: 3% nonfat dry milk in TBST.  
Detection: ECL Basic Kit (RM00020).  
Exposure time: 60s.



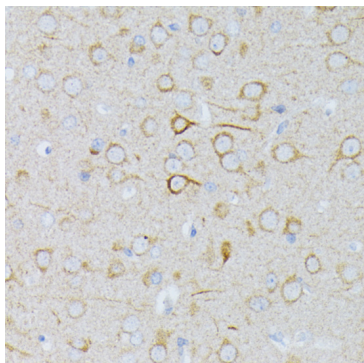
Western blot analysis of extracts of various cell lines, using MEK1 antibody (A12687) at 1:3000 dilution.  
Secondary antibody: HRP Goat Anti-Rabbit IgG (H+L) (AS014) at 1:10000 dilution.  
Lysates/proteins: 25µg per lane.  
Blocking buffer: 3% nonfat dry milk in TBST.  
Detection: ECL Enhanced Kit (RM00021).  
Exposure time: 90s.



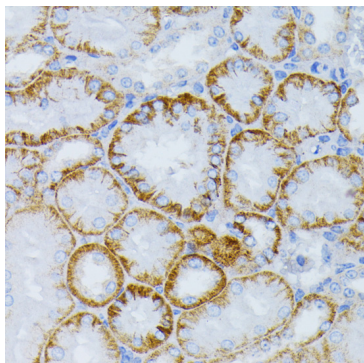
Western blot analysis of extracts from normal (control) and MEK1 knockout (KO) HeLa cells, using MEK1 antibody (A12687) at 1:1000 dilution.  
Secondary antibody: HRP Goat Anti-Rabbit IgG (H+L) (AS014) at 1:10000 dilution.  
Lysates/proteins: 25µg per lane.  
Blocking buffer: 3% nonfat dry milk in TBST.  
Detection: ECL Basic Kit (RM00020).  
Exposure time: 5s.

## Validation Data

---



Immunohistochemistry analysis of paraffin-embedded Rat brain using MEK1 antibody (A12687) at dilution of 1:100 (40x lens). Perform microwave antigen retrieval with 10 mM PBS buffer pH 7.2 before commencing with IHC staining protocol.



Immunohistochemistry analysis of paraffin-embedded mouse kidney using MEK1 antibody (A12687) at dilution of 1:100 (40x lens). Perform microwave antigen retrieval with 10 mM PBS buffer pH 7.2 before commencing with IHC staining protocol.