

Phospho-MAP2K4-S257 Antibody kit

Catalog No.: RK05802

Basic Information

Observed MW

44kDa

Calculated MW

44kDa

Category

Primary antibody

Recommended Dilutions

AP0068 WB 1:500 - 1:2000**A14781 WB** 1:500 - 1:2000For more information please visit
www.abclonal.com


Product Information

Source Rabbit
Isotype IgG**Purification**

Affinity purification

StorageStore at -20°C. Avoid freeze / thaw cycles.
Buffer: PBS with 0.02% sodium azide, 50% glycerol, pH7.3.

Contact

 | 400-999-6126 | cn.market@abclonal.com.cn | www.abclonal.com.cn

Background

This gene encodes a member of the mitogen-activated protein kinase (MAPK) family. Members of this family act as an integration point for multiple biochemical signals and are involved in a wide variety of cellular processes such as proliferation, differentiation, transcription regulation, and development. They form a three-tiered signaling module composed of MAPKKKs, MAPKKs, and MAPKs. This protein is phosphorylated at serine and threonine residues by MAPKKKs and subsequently phosphorylates downstream MAPK targets at threonine and tyrosine residues. A similar protein in mouse has been reported to play a role in liver organogenesis. A pseudogene of this gene is located on the long arm of chromosome X. Alternative splicing results in multiple transcript variants.

Component

Catalog No.	Product Name	Applications	Cross-Reactivity
AP0068	Phospho-MAP2K4-S257 ELISA, WB Rabbit pAb		Human, Mouse, Rat
A14781	[KO Validated] MAP2K4 ELISA, WB, IHC-P Rabbit pAb		Human, Mouse, Rat

Immunogen Information

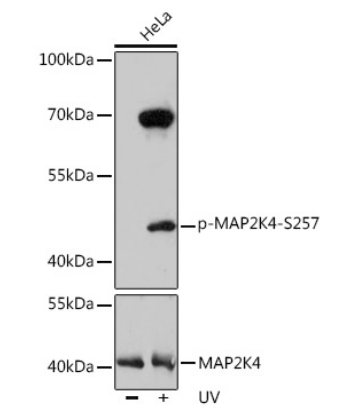
Gene ID
6416**Swiss Prot**
P45985**Immunogen**

A synthetic phosphorylated peptide around S257 of human MAP2K4 (NP_003001.1).
Recombinant fusion protein containing a sequence corresponding to amino acids 300-399 of human MAP2K4 (NP_003001.1).

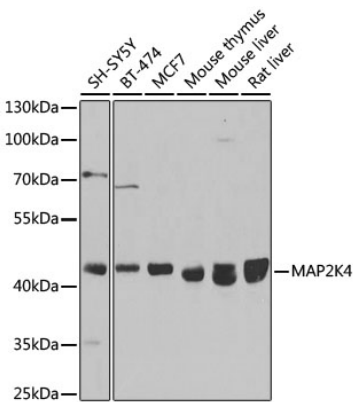
Synonyms

MAP2K4; JNKK; JNKK1; MAPKK4; MEK4; MKK4; PRKMK4; SAPKK-1; SAPKK1; SEK1; SERK1; SKK1

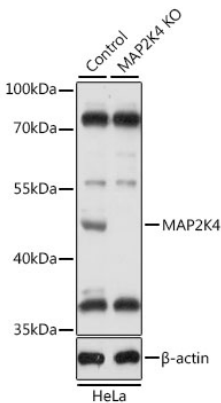
Validation Data



Western blot analysis of extracts of HeLa cells, using Phospho-MAP2K4-S257 pAb (AP0068) at 1:1000 dilution or MAP2K4 antibody (A14781). HeLa cells were treated by UV at room temperature for 15-30 minutes.
Secondary antibody: HRP Goat Anti-Rabbit IgG (H+L) (AS014) at 1:10000 dilution.
Lysates/proteins: 25µg per lane.
Blocking buffer: 3% nonfat dry milk in TBST.
Detection: ECL Basic Kit (RM00020).
Exposure time: 90s.



Western blot analysis of extracts of various cell lines, using MAP2K4 antibody (A14781) at 1:1000 dilution.
Secondary antibody: HRP Goat Anti-Rabbit IgG (H+L) (AS014) at 1:10000 dilution.
Lysates/proteins: 25µg per lane.
Blocking buffer: 3% nonfat dry milk in TBST.
Detection: ECL Basic Kit (RM00020).
Exposure time: 90s.



Western blot analysis of extracts from normal (control) and MAP2K4 knockout (KO) HeLa cells, using MAP2K4 antibody (A14781) at 1:1000 dilution.
Secondary antibody: HRP Goat Anti-Rabbit IgG (H+L) (AS014) at 1:10000 dilution.
Lysates/proteins: 25µg per lane.
Blocking buffer: 3% nonfat dry milk in TBST.
Detection: ECL Basic Kit (RM00020).
Exposure time: 5s.