

Phospho-RELA-S276 Antibody kit

Catalog No.: RK06004

Basic Information

Observed MW

65kDa

Calculated MW

60kDa

Category

Primary antibody

Recommended Dilutions

AP0123 WB 1:100 - 1:500**A16271 WB** 1:500 - 1:2000For more information please visit
www.abclonal.com

Product Information

Source Rabbit
Isotype IgG**Purification**



Affinity purification

Storage

Store at -20°C. Avoid freeze / thaw cycles.

Buffer: PBS with 0.05% proclin300,50% glycerol,pH7.3.

Contact

 | 400-999-6126 | cn.market@abclonal.com.cn | www.abclonal.com.cn

Background

NF-kappa-B is a ubiquitous transcription factor involved in several biological processes. It is held in the cytoplasm in an inactive state by specific inhibitors. Upon degradation of the inhibitor, NF-kappa-B moves to the nucleus and activates transcription of specific genes. NF-kappa-B is composed of NFKB1 or NFKB2 bound to either REL, RELA, or RELB. The most abundant form of NF-kappa-B is NFKB1 complexed with the product of this gene, RELA. Four transcript variants encoding different isoforms have been found for this gene.

Component

Catalog No.	Product Name	Applications	Cross-Reactivity
AP0123	Phospho-NF-kB p65/RelA-S276 Rabbit pAb	ELISA,WB,IHC-P,IF/ICC	Human, Mouse, Rat
A16271	NF-kB p65/RelA Rabbit pAb	ELISA,WB,IF/ICC	Human, Mouse, Rat

Immunogen Information

Gene ID

5970

Swiss Prot

Q04206

Immunogen

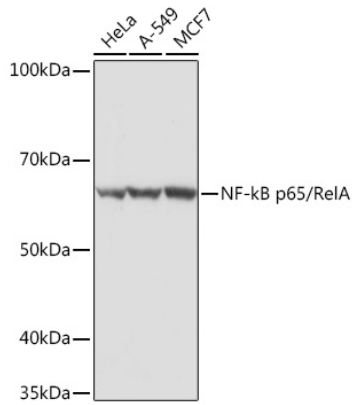
A synthetic phosphorylated peptide around S276 of human RelA (NP_068810.3).

A synthetic peptide corresponding to a sequence within amino acids 100-200 of human NF-kB p65/RelA (NP_068810.3).

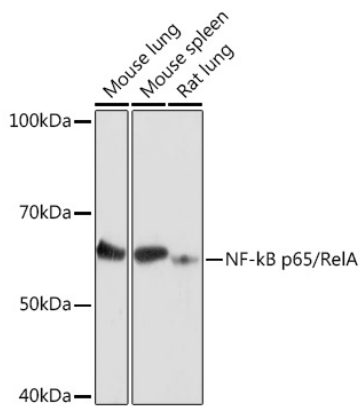
Synonyms

NFKB3;p65;NF-kB p65;RELA;CMCU

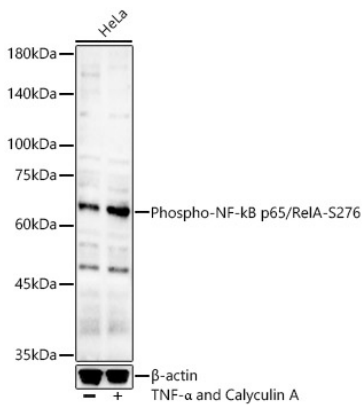
Validation Data



Western blot analysis of various lysates using NF-kB p65/RelA Rabbit pAb (A16271) at 1:500 dilution.
 Secondary antibody: HRP Goat Anti-Rabbit IgG (H+L) (AS014) at 1:10000 dilution.
 Lysates/proteins: 25µg per lane.
 Blocking buffer: 3% nonfat dry milk in TBST.
 Detection: ECL Basic Kit (RM00020).
 Exposure time: 3s.

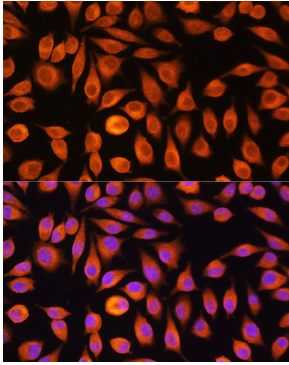


Western blot analysis of various lysates using NF-kB p65/RelA Rabbit pAb (A16271) at 1:500 dilution.
 Secondary antibody: HRP Goat Anti-Rabbit IgG (H+L) (AS014) at 1:10000 dilution.
 Lysates/proteins: 25µg per lane.
 Blocking buffer: 3% nonfat dry milk in TBST.
 Detection: ECL Basic Kit (RM00020).
 Exposure time: 10s.

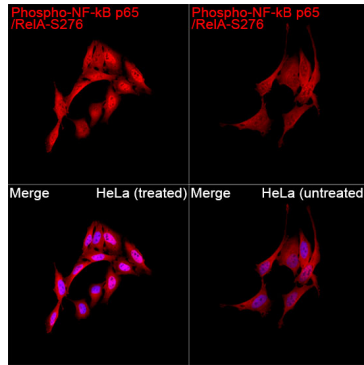


Western blot analysis of lysates from HeLa cells, using Phospho-NF-kB p65/RelA-S276 Rabbit pAb (AP0123) at 1:400 dilution. HeLa cells were treated by TNF-α (20 ng/ml) and Calyculin A (100 nM) at 37°C for 30 minutes after serum-starvation overnight.
 Secondary antibody: HRP Goat Anti-Rabbit IgG (H+L) (AS014) at 1:10000 dilution.
 Lysates/proteins: 25µg per lane.
 Blocking buffer: 3% nonfat dry milk in TBST.
 Detection: ECL Basic Kit (RM00020).
 Exposure time: 180s.

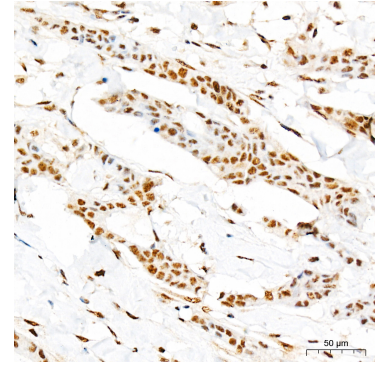
Validation Data



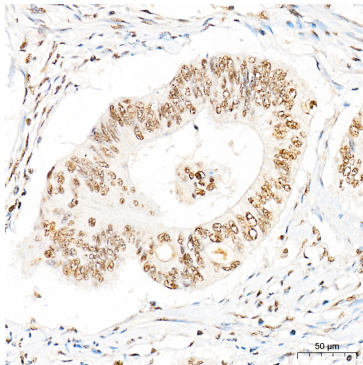
Immunofluorescence analysis of L929 cells using NF-kB p65/RelA Rabbit pAb (A16271) at dilution of 1:100. Secondary antibody: Cy3 Goat Anti-Rabbit IgG (H+L) (AS007) at 1:500 dilution. Blue: DAPI for nuclear staining.



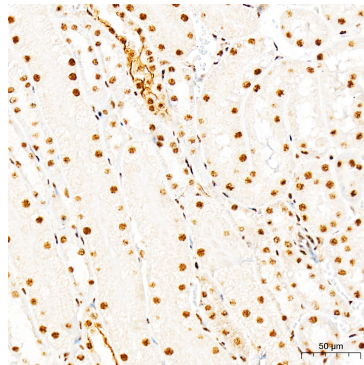
Immunofluorescence analysis of HeLa cells (treated with CA) and HeLa cells (untreated) using Phospho-NF-kB p65/RelA-S276 Rabbit pAb (AP0123) at a dilution of 1:100 (40x lens). Secondary antibody: Cy3-conjugated Goat anti-Rabbit IgG (H+L)(AS007) at 1:500 dilution. Blue: DAPI for nuclear staining.



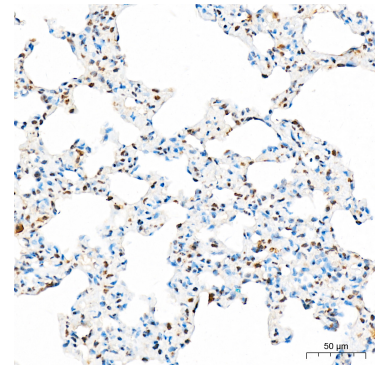
Immunohistochemistry analysis of Phospho-NF-kB p65/RelA-S276 in paraffin-embedded Human breast cancer tissue using Phospho-NF-kB p65/RelA-S276 Rabbit pAb (AP0123) at a dilution of 1:500 (40x lens). High pressure antigen retrieval performed with 0.01M Citrate Buffer(pH 6.0) prior to IHC staining.



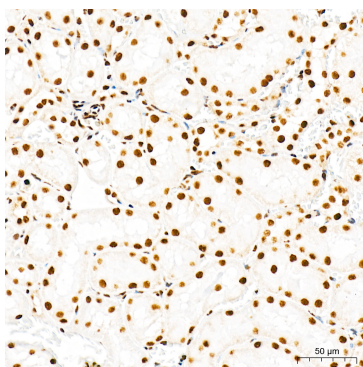
Immunohistochemistry analysis of Phospho-NF-kB p65/RelA-S276 in paraffin-embedded Human colon carcinoma tissue using Phospho-NF-kB p65/RelA-S276 Rabbit pAb (AP0123) at a dilution of 1:500 (40x lens). High pressure antigen retrieval performed with 0.01M Citrate Buffer(pH 6.0) prior to IHC staining.



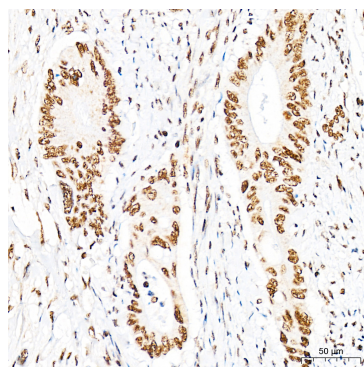
Immunohistochemistry analysis of Phospho-NF-kB p65/RelA-S276 in paraffin-embedded Mouse kidney tissue using Phospho-NF-kB p65/RelA-S276 Rabbit pAb (AP0123) at a dilution of 1:500 (40x lens). High pressure antigen retrieval performed with 0.01M Citrate Buffer(pH 6.0) prior to IHC staining.



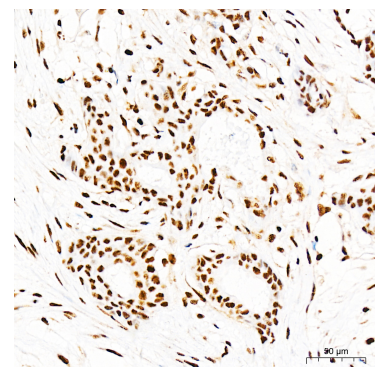
Immunohistochemistry analysis of Phospho-NF-kB p65/RelA-S276 in paraffin-embedded Rat lung tissue using Phospho-NF-kB p65/RelA-S276 Rabbit pAb (AP0123) at a dilution of 1:500 (40x lens). High pressure antigen retrieval performed with 0.01M Citrate Buffer(pH 6.0) prior to IHC staining.



Immunohistochemistry analysis of Phospho-NF-kB p65/RelA-S276 in paraffin-embedded Rat kidney tissue using Phospho-NF-kB p65/RelA-S276 Rabbit pAb (AP0123) at a dilution of 1:1600 (40x lens). High pressure antigen retrieval performed with 0.01M Citrate Buffer(pH 6.0) prior to IHC staining.

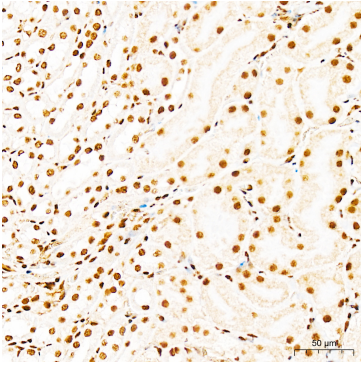


Immunohistochemistry analysis of Phospho-NF-kB p65/RelA-S276 in paraffin-embedded Human colon carcinoma tissue using Phospho-NF-kB p65/RelA-S276 Rabbit pAb (AP0123) at a dilution of 1:1600 (40x lens). High pressure antigen retrieval performed with 0.01M Citrate Buffer(pH 6.0) prior to IHC staining.

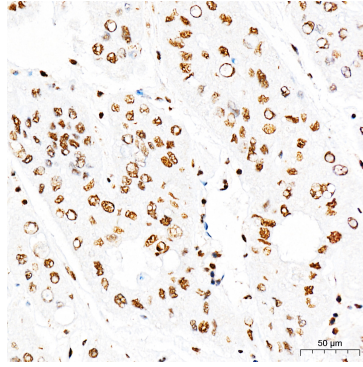


Immunohistochemistry analysis of Phospho-NF-kB p65/RelA-S276 in paraffin-embedded Human breast cancer tissue using Phospho-NF-kB p65/RelA-S276 Rabbit pAb (AP0123) at a dilution of 1:1600 (40x lens). High pressure antigen retrieval performed with 0.01M Citrate Buffer(pH 6.0) prior to IHC staining.

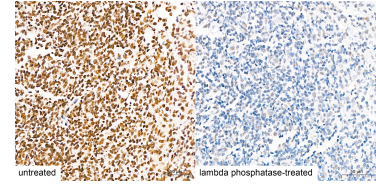
Validation Data



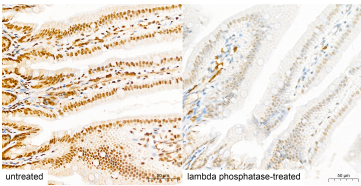
Immunohistochemistry analysis of Phospho-NF-kB p65/RelA-S276 in paraffin-embedded Mouse kidney tissue using Phospho-NF-kB p65/RelA-S276 Rabbit pAb (AP0123) at a dilution of 1:1600 (40x lens). High pressure antigen retrieval performed with 0.01M Citrate Buffer(pH 6.0) prior to IHC staining.



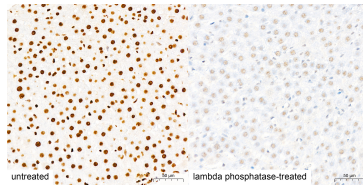
Immunohistochemistry analysis of Phospho-NF-kB p65/RelA-S276 in paraffin-embedded Human liver cancer tissue using Phospho-NF-kB p65/RelA-S276 Rabbit pAb (AP0123) at a dilution of 1:1600 (40x lens). High pressure antigen retrieval performed with 0.01M Citrate Buffer(pH 6.0) prior to IHC staining.



Immunohistochemistry analysis of paraffin-embedded Human tonsil tissue, untreated (left) and lambda phosphatase-treated (right), using Phospho-NF-kB p65/RelA-S276 Rabbit pAb (AP0123) at a dilution of 1:1600 (40x lens). High pressure antigen retrieval performed with 0.01M Citrate Buffer(pH 6.0) prior to IHC staining.



Immunohistochemistry analysis of paraffin-embedded Mouse intestin tissue, untreated (left) and lambda phosphatase-treated (right), using Phospho-NF-kB p65/RelA-S276 Rabbit pAb (AP0123) at a dilution of 1:1600 (40x lens). High pressure antigen retrieval performed with 0.01M Citrate Buffer(pH 6.0) prior to IHC staining.



Immunohistochemistry analysis of paraffin-embedded Rat liver tissue, untreated (left) and lambda phosphatase-treated (right), using Phospho-NF-kB p65/RelA-S276 Rabbit pAb (AP0123) at a dilution of 1:1600 (40x lens). High pressure antigen retrieval performed with 0.01M Citrate Buffer(pH 6.0) prior to IHC staining.