

Phospho-Vimentin-S56 Antibody kit

Catalog No.: RK06009

Basic Information

Observed MW

57kDa

Calculated MW

54kDa

Category

Primary antibody

Recommended Dilutions

AP0804 WB 1:500 - 1:2000**A11952 WB** 1:500 - 1:1000For more information please visit
www.abclonal.com

Product Information

Source Rabbit
Isotype IgG**Purification**



Affinity purification

Storage

Store at -20°C. Avoid freeze / thaw cycles.

Buffer: PBS with 0.01% thimerosal, 50% glycerol, pH7.3.

Contact

 | 400-999-6126 | cn.market@abclonal.com.cn | www.abclonal.com.cn

Background

This gene encodes a type III intermediate filament protein. Intermediate filaments, along with microtubules and actin microfilaments, make up the cytoskeleton. The encoded protein is responsible for maintaining cell shape and integrity of the cytoplasm, and stabilizing cytoskeletal interactions. This protein is involved in neuritogenesis and cholesterol transport and functions as an organizer of a number of other critical proteins involved in cell attachment, migration, and signaling. Bacterial and viral pathogens have been shown to attach to this protein on the host cell surface. Mutations in this gene are associated with congenital cataracts in human patients.

Component

Catalog No.	Product Name	Applications	Cross-Reactivity
AP0804	Phospho-Vimentin-S56 Rabbit pAb	ELISA, WB	Human, Rat
A11952	[KD Validated] Vimentin Rabbit pAb	ELISA, WB, IHC-P, IF/ICC	Human, Mouse, Rat

Immunogen Information

Gene ID

7431

Swiss Prot

P08670

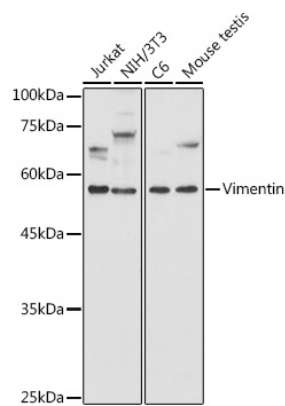
Immunogen

A synthetic phosphorylated peptide around S56 of human VIM (NP_003371.2).
Recombinant fusion protein containing a sequence corresponding to amino acids 1-101 of human Vimentin (NP_003371.2).

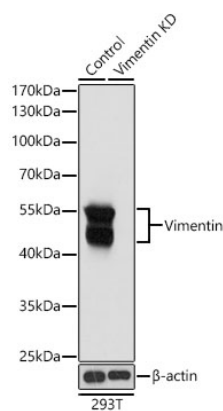
Synonyms

CTRCT30; HEL113; Vimentin; VIM; vimentin

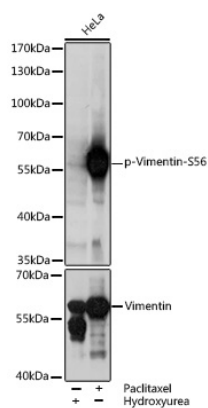
Validation Data



Western blot analysis of various lysates using [KD Validated] Vimentin Rabbit pAb (A11952) at 1:1000 dilution.
Secondary antibody: HRP Goat Anti-Rabbit IgG (H+L) (AS014) at 1:10000 dilution.
Lysates/proteins: 25µg per lane.
Blocking buffer: 3% nonfat dry milk in TBST.
Detection: ECL Basic Kit (RM00020).
Exposure time: 10s.

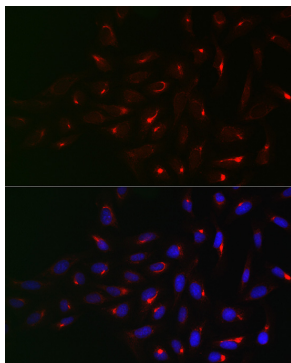


Western blot analysis of lysates from wild type (WT) and Vimentin knockdown (KD) 293T cells, using [KD Validated] Vimentin Rabbit pAb (A11952) at 1:1000 dilution.
Secondary antibody: HRP Goat Anti-Rabbit IgG (H+L) (AS014) at 1:10000 dilution.
Lysates/proteins: 25µg per lane.
Blocking buffer: 3% nonfat dry milk in TBST.
Detection: ECL Basic Kit (RM00020).
Exposure time: 5s.



Western blot analysis of lysates from HeLa cells, using Phospho-Vimentin-S56 pAb (AP0804) at 1:3000 dilution or Vimentin antibody (A11952).HeLa cells were treated by Hydroxyurea (4 mM) at 37°C for 20 hours.HeLa cells were treated by Paclitaxel (100 nM/mL) at 37°C for 20 hours.
Secondary antibody: HRP Goat Anti-Rabbit IgG (H+L) (AS014) at 1:10000 dilution.
Lysates/proteins: 25µg per lane.
Blocking buffer: 3% BSA.
Detection: ECL Basic Kit (RM00020).
Exposure time: 1s.

Validation Data



Immunofluorescence analysis of U2OS cells using [KD Validated] Vimentin Rabbit pAb (A11952) at dilution of 1:50 (40x lens). Secondary antibody: Cy3 Goat Anti-Rabbit IgG (H+L) (AS007) at 1:500 dilution. Blue: DAPI for nuclear staining.