

# Mouse T/NK Panel

Catalog No.: RK40003

## Basic Information

**Observed MW**

**Calculated MW**

**Category**

Primary antibody

**Applications**

FC

**Cross-Reactivity**

Mouse

## Background

The 4-fluorescence Mouse T/NK panel has been designed for reliable identification of mouse T and NK lymphocyte populations in mouse blood or tissue samples. ABflo® multi-fluorescence panel RK40003 covers the core CD markers of CD3e, CD4, CD8a, and CD161c/NK1.1. Our plots showed clear subgroups of CD3e+ T cells, CD4+ Th cells, CD8a+ CTL cells, and CD161c/NK1.1NK+ cells (cite figures).

## Recommended Dilutions

**FC** 1/5 µl per 10<sup>6</sup> cells in  
100 µl volume

## Immunogen Information

**Gene ID**

**Swiss Prot**

**Immunogen**

This information is considered to be commercially sensitive.

**Synonyms**

## Contact

 | 400-999-6126

 | [cn.market@abclonal.com.cn](mailto:cn.market@abclonal.com.cn)

 | [www.abclonal.com.cn](http://www.abclonal.com.cn)

## Product Information

**Source**

Armenian Hamster/Rabbit

**Isotype**

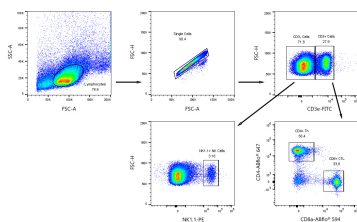
**Purification**

**Storage**

Store at 2-8°C. Avoid freeze.

Buffer: PBS with 0.03% proclin300,0.2% BSA,pH7.3.

## Validation Data



Multicolor flow cytometry panel to identify Mouse T/NK cells subsets. Mouse T/NK were surface stained with FITC Anti-Mouse CD3e mAb (A23322,5 µL/Test), ABflo® 647 Rabbit anti-Mouse CD4 mAb (A24721,5 µL/Test), ABflo® 594 Rabbit anti-Mouse CD8a mAb (A23905,5 µL/Test), PE Rabbit anti-Mouse CD161c/NK1.1 mAb (A24107,5 µL/Test). All antibodies are validated for Flow cytometry. CD4+ T lymphocytes are defined as CD3+CD4+; CD8+ T lymphocytes are defined as CD3+CD8+; NK cells are defined as CD3-CD161c/NK1.1+.