

Mouse Treg Panel

Catalog No.: RK40004

Basic Information

Observed MW

Calculated MW

Category

Primary antibody

Applications

FC

Cross-Reactivity

Mouse

Background

The 3-fluorescence Mouse Treg Panel has been designed for identify and phenotype CD4+ T regulatory cells in Mouse blood or tissue samples. ABflo® multi-fluorescence panel RK40004 covers the core CD markers of FOXP3, CD4 and CD25. Our plots showed clear subgroups of CD4+ T cells, and CD25+ FOXP3+ Treg cells (cite figures).

Recommended Dilutions

FC 5 µl per 10⁶ cells in
100 µl volume

Immunogen Information

Gene ID


Swiss Prot

Immunogen

This information is considered to be commercially sensitive.

Synonyms

Contact

 | 400-999-6126

 | cn.market@abclonal.com.cn

 | www.abclonal.com.cn

Product Information

Source

Rabbit

Isotype

IgG

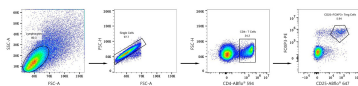
Purification

Storage

Store at 2-8°C. Avoid freeze.

Buffer: PBS with 0.09% Sodium azide, 0.2% BSA, pH7.3.

Validation Data



Multicolor flow cytometry panel to identify mouse regulatory T cells. C57 BL/6 mouse splenocytes were surface-stained with ABflo® 594 Rabbit anti-Mouse CD4 mAb (A24722,5 µL/Test) and ABflo® 647 Rabbit anti-Mouse CD25 mAb (A23808,5 µL/Test), and then intracellularly-stained with PE Rabbit anti-Mouse FOXP3 mAb (A26227,5 µL/Test) . All antibodies are validated for Flow cytometry. CD4 T cells are defined as CD4+; Regulatory T cells are defined as CD25+ FOXP3+.