

Human Treg Panel

Catalog No.: RK40005

Basic Information

Observed MW

Calculated MW

Category

Primary antibody

Applications

FC

Cross-Reactivity

Human

Background

The 3-fluorescence Human Treg Panel has been designed for identify and phenotype CD4+ T regulatory cells in Human blood or tissue samples. ABflo® multi-fluorescence panel RK40005 covers the core CD markers of CD4, CD25 and CD127. Our plots showed clear subgroups of CD4+ T cells, and CD25+ CD127low/- Treg cells (cite figures).

Recommended Dilutions

FC 5 µl per 10⁶ cells in
100 µl volume

Immunogen Information

Gene ID

Swiss Prot

Immunogen

This information is considered to be commercially sensitive.

Synonyms

Contact

 | 400-999-6126

 | cn.market@abclonal.com.cn

 | www.abclonal.com.cn

Product Information

Source

Rabbit

Isotype

IgG

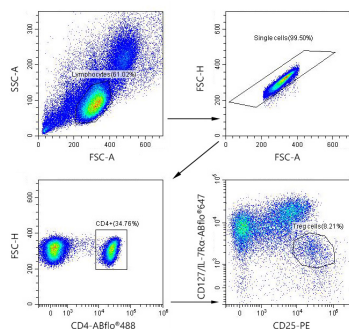
Purification

Storage

Store at 2-8°C. Avoid freeze.

Buffer: PBS with 0.09% Sodium azide, 0.2% BSA, pH7.3.

Validation Data



Multicolor flow cytometry panel to identify Human Treg subsets. Human PBMC were surface stained with ABflo® 488 Rabbit anti-Human/Monkey CD4 mAb (A22773, 5 µL/Test), PE Rabbit anti-Human/Monkey CD25 mAb (A26773, 5 µL/Test), ABflo® 647 Rabbit anti-Human/Monkey CD127/IL-7Rα mAb (A25162, 5 µL/Test). All antibodies are validated for Flow cytometry. T helper cells are defined as CD4+; Treg cells are defined as CD25+CD127low/-.