

# Mouse Treg Panel

Catalog No.: RK40023

## Basic Information

### Observed MW

### Calculated MW

### Category

Primary antibody

### Applications

FC

### Cross-Reactivity

Mouse

## Background

The 3-fluorescence Mouse Treg Panel has been designed for identify and phenotype CD4+ T regulatory cells in Mouse blood or tissue samples. ABflo® multi-fluorescence panel RK40023 covers the core CD markers of FOXP3, CD4 and CD25. Our plots showed clear subgroups of CD4+ T cells, and CD25+ FOXP3+ Treg cells (cite figures).

## Recommended Dilutions

FC                      5 µl per 10<sup>6</sup> cells in  
                                 100 µl volume

## Immunogen Information

### Gene ID

### Swiss Prot

### Immunogen

This information is considered to be commercially sensitive.

### Synonyms

## Contact

☎ | 400-999-6126

✉ | [cn.market@abclonal.com.cn](mailto:cn.market@abclonal.com.cn)

🌐 | [www.abclonal.com.cn](http://www.abclonal.com.cn)

## Product Information

### Source

Rabbit

### Isotype

IgG

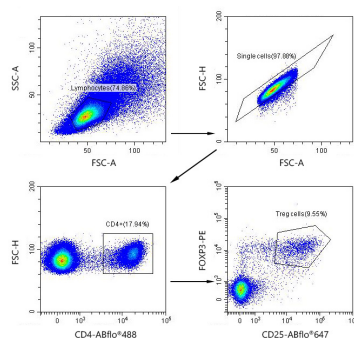
### Purification

### Storage

Store at 2-8°C. Avoid freeze.

Buffer: PBS with 0.09% Sodium azide, 0.2% BSA, pH7.3.

## Validation Data



Multicolor flow cytometry panel to identify Mouse Treg subsets. C57BL/6 mouse splenocytes were surface stained with ABflo® 488 Rabbit anti-Mouse CD4 mAb (A24720,5 µL/Test), ABflo® 647 Rabbit anti-Mouse CD25 mAb (A23808,5 µL/Test) and then intracellularly-stained with PE Rabbit anti-Mouse FOXP3 mAb (A26227,5 µL/Test). All antibodies are validated for Flow cytometry. T helper cells are defined as CD4+; Treg cells are defined as CD25+FOXP3+.