

EZH2 Knockout HeLa Cell Lysate, Homozygous

Catalog No.: RM02009

Basic Information

Catalog No.

RM02009

Category

Cell Lysate

Parental Cell line

HeLa

Genotype

Knockout

Gene Information

Gene Symbol

EZH2

Species

Human

Gene ID

2146

Swiss Prot

Q15910

Synonyms

ENX-1; ENX1; EZH1; EZH2b; KMT6;
KMT6A; WVS; WVS2

Contact

☎ | 400-999-6126

✉ | cn.market@abclonal.com.cn

🌐 | www.abclonal.com.cn

Background

This gene encodes a member of the Polycomb-group (PcG) family. PcG family members form multimeric protein complexes, which are involved in maintaining the transcriptional repressive state of genes over successive cell generations. This protein associates with the embryonic ectoderm development protein, the VAV1 oncoprotein, and the X-linked nuclear protein. This protein may play a role in the hematopoietic and central nervous systems. Multiple alternatively spliced transcript variants encoding distinct isoforms have been identified for this gene. [provided by RefSeq, Feb 2011]

Product Information

Description

EZH2 Knockout HeLa Cell Line is engineered from HeLa cell line with Gene-Editing technology.

Allele-1:1bp insertion in exon3

Allele-2:13bp deletion in exon3

Mammalian cells such as human, rat and mouse cells are normally diploid with two alleles. Homozygote: both alleles were knocked out, mRNA has no signal, no expression of proteins. Heterozygote: only one allele was knocked out, the mRNA transcript levels was decreased compared to wild type, and the protein expression levels was also lower than that of the wild type.

Packaging

1 vial parental cell Lysate and 1 vial knockout cell Lysate

Shipping Conditions

4°C

Amount

50μL, 2μg/μL.

Storage

Lysate is stable for 12 months when stored at -20°C. Minimizing freeze-thaw cycles.

Protocol

To be used as WB control. Lysate is supplied in 1× SDS sample buffer (2% SDS, 60 mM Tris-HCl pH 6.8, 10% Glycerol, 0.02% Bromophenol blue, 60 mM beta-mercaptoethanol). Lysate should be boiled for 3 - 5 minutes before loading onto gel.

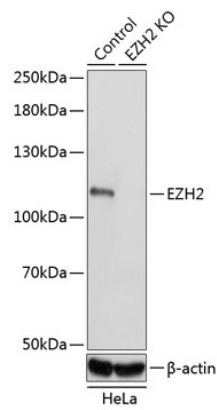
Sequencing data

WT ATTATGATGGGAAAGTAC-ACGGGGATAGAGGTGAGC
Mut ATTATGATGGGAAAGTAC~~C~~ACGGGGATAGAGGTGAGC
Allele-1: 1bp insertion in exon3

WT TTATGATGGGAAAG*****AGGTGAGCCATATG
Mut TTATGATGGGAAAG***Deletion***AGGTGAGCCATATG
Allele-2: 13bp deletion in exon3

Genome sequence analysis of PCR products from parental (WT) and EZH2 knockout (KO) HeLa cells, using sanger sequencing.

WB data



Western blot analysis of extracts from parental (Control) and EZH2 knockout (KO) HeLa cells, using EZH2 antibody (A11085) at 1:1000 dilution.