

# MAPK14 Knockdown HeLa Cell Lysate, Heterozygous

Catalog No.: RM02012

## Basic Information

**Catalog No.**

RM02012

**Category**

Cell Lysate

**Parental Cell line**

HeLa

**Genotype**

Knockdown

## Gene Information

**Gene Symbol**

MAPK14

**Species**

Human

**Gene ID**

1432

**Swiss Prot**

Q16539

**Synonyms**CSBP; CSBP1; CSBP2; CSPB1; EXIP; Mxi2;  
PRKM14; PRKM15; RK; SAPK2A; p38;  
p38ALPHA

## Contact

 | 400-999-6126 | [cn.market@abclonal.com.cn](mailto:cn.market@abclonal.com.cn) | [www.abclonal.com.cn](http://www.abclonal.com.cn)

## Background

The protein encoded by this gene is a member of the MAP kinase family. MAP kinases act as an integration point for multiple biochemical signals, and are involved in a wide variety of cellular processes such as proliferation, differentiation, transcription regulation and development. This kinase is activated by various environmental stresses and proinflammatory cytokines. The activation requires its phosphorylation by MAP kinase kinases (MKKs), or its autophosphorylation triggered by the interaction of MAP3K7IP1/TAB1 protein with this kinase. The substrates of this kinase include transcription regulator ATF2, MEF2C, and MAX, cell cycle regulator CDC25B, and tumor suppressor p53, which suggest the roles of this kinase in stress related transcription and cell cycle regulation, as well as in genotoxic stress response. Four alternatively spliced transcript variants of this gene encoding distinct isoforms have been reported. [provided by RefSeq, Jul 2008]

## Product Information

**Description**

MAPK14 Knockdown HeLa Cell Line is engineered from HeLa cell line with Gene-Editing technology.

Allele-1:63bp deletion in exon2

Allele-2:61bp insertion and 63bp deletion in exon2

Mammalian cells such as human, rat and mouse cells are normally diploid with two alleles.

Homozygote: both alleles were knocked out, mRNA has no signal, no expression of proteins.

Heterozygote: only one allele was knocked out, the mRNA transcript levels was decreased compared to wild type, and the protein expression levels was also lower than that of the wild type.

**Packaging**

1 vial parental cell Lysate and 1 vial knockout cell Lysate

**Shipping Conditions**

4°C

**Amount**

50μL, 2μg/μL.

**Storage**

Lysate is stable for 12 months when stored at -20°C. Minimizing freeze-thaw cycles.

**Protocol**

To be used as WB control. Lysate is supplied in 1× SDS sample buffer (2% SDS, 60 mM Tris-HCl pH 6.8, 10% Glycerol, 0.02% Bromophenol blue, 60 mM beta-mercaptoethanol). Lysate should be boiled for 3 - 5 minutes before loading onto gel.

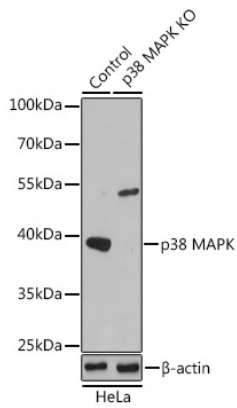
## Sequencing data

WT AAAACGGGTACG\*\*\*\*\*AGAACTGCGTTA  
Mut AAAACGGGTACG\*\*\*Deletion\*\*\*AGAACTGCGTTA  
Allele-1: 63bp deletion in exon2

WT AAAACGGG \*\*\*\*\*GAGAACTGCG  
Mut AAAACGGG\*Insertion\*\*\*Deletion\*\*\*GAGAACTGCG  
Allele-2: 61bp Insertion and 63bp deletion in exon2

Genome sequence analysis of PCR products from parental (WT) and MAPK14 knockdown (KD) HeLa cells, using sanger sequencing.

## WB data



Western blot analysis of extracts from parental (Control) and MAPK14 knockdown (KD) HeLa cells, using MAPK14 antibody (A14401) at 1:1000 dilution..