

# Rabbit anti-Human IL-2 mAb (CAP)

Catalog No.: RM17589 **1 Publications**

## Basic Information

**Catalog No.**  
RM17589

**Catagory**  
Elisa Antibody Kit

**Application**  
ELISA, Multiplex, CLIA

## Product Information

**Ig Type**  
Rabbit IgG

**Purification**  
Affinity purification

**Endotoxin Level**  
< 1.0 EU/μg of the protein by LAL method.

**Storage**  
Store at -20°C.  
**Avoid repeated freeze-thaw cycles.**

**Formulation**  
Supplied as a 0.2um filtered solution in PBS with 0.1%Braveds MB-1, PH 7.4.

## Contact

 | [order@abclonal.com](mailto:order@abclonal.com)

 | [support@abclonal.com](mailto:support@abclonal.com)

 | [www.abclonal.com](http://www.abclonal.com)

## Background

This gene is a member of the interleukin 2 (IL2) cytokine subfamily which includes IL4, IL7, IL9, IL15, IL21, erythropoietin, and thrombopoietin. The protein encoded by this gene is a secreted cytokine produced by activated CD4+ and CD8+ T lymphocytes, that is important for the proliferation of T and B lymphocytes. The receptor of this cytokine (IL2R) is a heterotrimeric protein complex whose gamma chain is also shared by IL4 and IL7. The expression of this gene in mature thymocytes is monoallelic, which represents an unusual regulatory mode for controlling the precise expression of a single gene. The targeted disruption of a similar gene in mice leads to ulcerative colitis-like disease, which suggests an essential role of this gene in the immune response to antigenic stimuli.

## Immunogen Information

**Immunogen**  
Recombinant IL-2 Protein

## Cross-Reactivity

No cross-reactivity in ELISA with recombinant hG-CSF, hGM-CSF, hIL-1β, hIL-1α, hIL-2R, hIL-3, hIL-4, hIL-6, hIL-8, hTGF-β 1, hTNF-α, mL-1β, mL-2, mL-6, mL-4, mL-5, mL-2

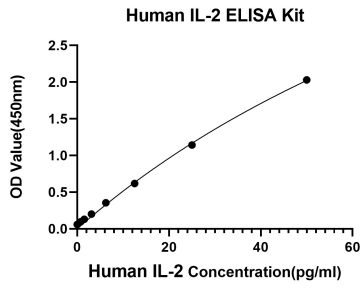
## Assay Applications

Human IL-2 Sanwich Immunoassay

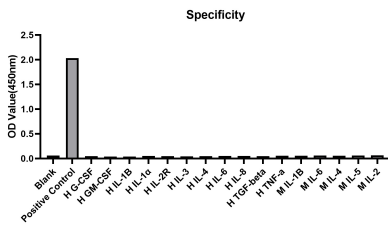
		Recommended Concentration	Sample
ELISA	Capture	2-8ug/mL	Rabbit anti-Human IL-2 mAb (Cat. No.RM17589)
	Detection	0.15-0.6ug/mL	Rabbit anti-Human IL-2 mAb (Cat. No.RM17590)
	Standard	15.63-1000pg/mL	Recombinant Human IL-2 Protein

CLIA	Capture	1-4ug/mL	Rabbit anti-Human IL-2 mAb (Cat. No.RM17589)
	Detection	0.5-2ug/mL	Rabbit anti-Human IL-2 mAb (Cat. No.RM17590)
	Standard	2.5-7500pg/mL	Recombinant Human IL-2 Protein

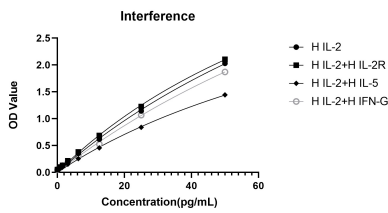
# Validation Data



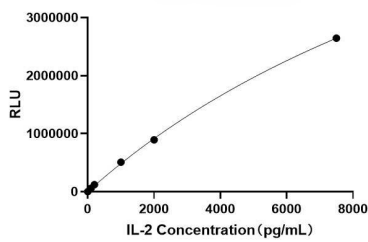
This standard curve is only for demonstration purposes. A standard curve should be generated for each assay.



No significant cross-reactivity or interference was observed.



No significant cross-reactivity or interference was observed.



This standard curve is only for demonstration purposes. A standard curve should be generated for each assay.