

Rabbit anti-Human IL-2 mAb (DET)

Catalog No.: RM17590

Basic Information

Catalog No.
RM17590

Catagory
Elisa Antibody Kit

Appplication
ELISA

Product Information

Ig Type
Rabbit IgG

Purification
Affinity purification

Endotoxin Level
< 1.0 EU/μg of the protein by LAL method.

Storage
This antibody can be stored at 2°C-8°C for one month without detectable loss of activity. Antibody products are stable for twelve months from date of receipt when stored at -20°C to -80°C. Preservative-Free.
Avoid repeated freeze-thaw cycles.

Formulation
Supplied as a 0.2um filtered solution in PBS with 0.1% Braveds MB-1, PH 7.4.

Contact

 | order@abclonal.com

 | support@abclonal.com

 | www.abclonal.com

Background

Interleukin-2 (IL-2) is an interleukin, a type of cytokine immune system signaling molecule, which is a leukocytotropic hormone that is instrumental in the body's natural response to microbial infection and in discriminating between foreign (non-self) and self. IL-2 mediates its effects by binding to IL-2 receptors, which are expressed by lymphocytes, the cells that are responsible for immunity. Mature human IL-2 shares 56% and 66% aa sequence identity with mouse and rat IL-2, respectively. Human and mouse IL-2 exhibit crossspecies activity. The receptor for IL-2 consists of three subunits that are present on the cell surface in varying preformed complexes. IL-2 is also necessary during T cell development in the thymus for the maturation of a unique subset of T cells that are termed regulatory T cells (T-regs). After exiting from the thymus, T-Regs function to prevent other T cells from recognizing and reacting against "self antigens", which could result in "autoimmunity". T-Regs do so by preventing the responding cells from pro...

Immunogen Information

Immunogen
Recombinant IL-2 Protein

Cross-Reactivity

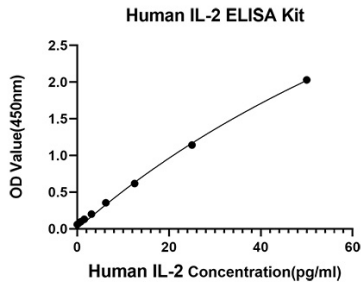
No cross-reactivity in ELISA assay with recombinant hG-CSF, hGM-CSF, hIL-1β, hIL-1α, hIL-2R, hIL-3, hIL-4, hIL-6, hIL-8, hTGF-β 1, hTNF-α, mL-1β, mL-2, mL-6, mL-4, mL-5, mL-2

Assay Applications

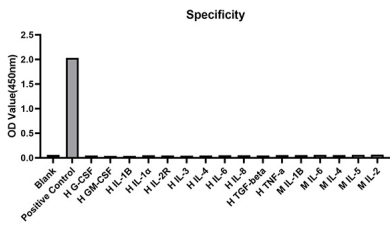
Human IL-2 Sanwich ELISA Immunoassay

	Recommended Concentration	Sample
ELISA Capture	2-8ug/mL	Rabbit anti-Human IL-2(CAP)(Cat. No.RM17589)
ELISA Detection	0.15-0.6ug/mL	Rabbit anti-Human IL-2(DET)(Cat. No.RM17590)
Standard	0.78-50pg/mL	Recombinant Human IL-2 Protein

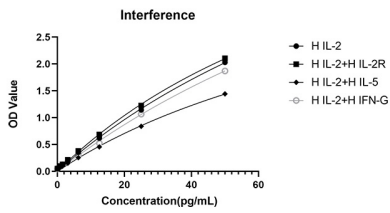
Validation Data



This standard curve is only for demonstration purposes. A standard curve should be generated for each assay.



No significant cross-reactivity or interference was observed.



No significant cross-reactivity or interference was observed.