

# Rabbit anti-Human IL-8 mAb (CAP)

**Catalog No.: RM17646**

## Basic Information

**Catalog No.**  
RM17646

**Catagory**  
Elisa Antibody Kit

**Application**  
ELISA

## Product Information

**Ig Type**  
Rabbit IgG


**Purification**  
Affinity purification


**Endotoxin Level**

**Storage**  
Store at -20°C. Avoid freeze / thaw cycles. Preservative 0.05%ProClin 300.  
**Avoid repeated freeze-thaw cycles.**

**Formulation**  
Supplied as a 0.2um filtered solution in PBS with 0.1%Braveds MB-1,PH 7.4.

## Contact

 | order@abclonal.com

 | support@abclonal.com

 | www.abclonal.com

## Background

The protein encoded by this gene is a member of the CXC chemokine family and is a major mediator of the inflammatory response. The encoded protein is commonly referred to as interleukin-8 (IL-8). IL-8 is secreted by mononuclear macrophages, neutrophils, eosinophils, T lymphocytes, epithelial cells, and fibroblasts. It functions as a chemotactic factor by guiding the neutrophils to the site of infection. Bacterial and viral products rapidly induce IL-8 expression. IL-8 also participates with other cytokines in the proinflammatory signaling cascade and plays a role in systemic inflammatory response syndrome (SIRS). This gene is believed to play a role in the pathogenesis of the lower respiratory tract infection bronchiolitis, a common respiratory tract disease caused by the respiratory syncytial virus (RSV). The overproduction of this proinflammatory protein is thought to cause the lung inflammation associated with cystic fibrosis. This proinflammatory protein is also suspected of playing a role in coronary artery disease and endothelia...

## Immunogen Information

**Immunogen**  
Recombinant IL-8 Protein

## Cross-Reactivity

No cross-reactivity in ELISA assay with recombinant mL-4, mL-8, mL-10

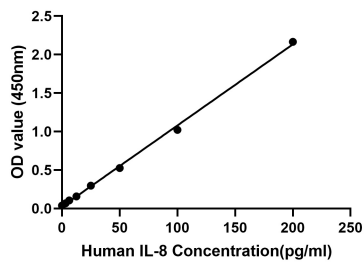
## Assay Applications

Human IL-8 Sanwich ELISA Immunoassay

	Recommended Concentration	Sample
ELISA Capture	1-4ug/mL	Rabbit anti-Human IL-8(CAP)(Cat. No.RM17646)
ELISA Detection	0.031-0.125ug/mL	Rabbit anti-Human IL-8(DET)(Cat. No.RM17647)
Standard	3.125-200pg/mL	Recombinant Human IL-8 Protein

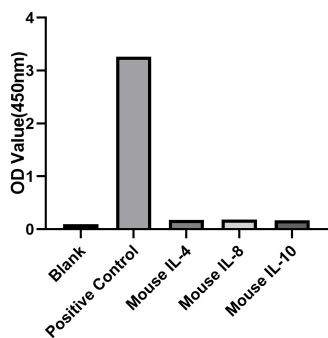
# Validation Data

### Human IL-8 ELISA Kit



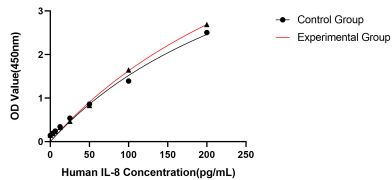
This standard curve is only for demonstration purposes. A standard curve should be generated for each assay.

### Specificity



No significant cross-reactivity or interference was observed.

### Stability



Placed at 37°C for 3 days, the stability of the standard curve all conform to CV <10%.