

# Rabbit anti-Human cTnI mAb

Catalog No.: RM17655

## Basic Information

**Catalog No.**  
RM17655

**Catagory**  
Elisa Antibody Kit

**Application**  
ELISA

## Product Information

**Ig Type**  
Rabbit IgG


**Purification**  
Affinity purification

**Endotoxin Level**


**Storage**  
Store at -20°C.  
**Avoid repeated freeze-thaw cycles.**

**Formulation**  
Supplied as a 0.2µm filtered solution in PBS with 0.05% Proclin300, PH 7.4.

## Contact

 | order@abclonal.com

 | support@abclonal.com

 | www.abclonal.com

## Background

Troponin I (TnI), along with troponin T (TnT) and troponin C (TnC), is one of 3 subunits that form the troponin complex of the thin filaments of striated muscle. TnI is the inhibitory subunit; blocking actin-myosin interactions and thereby mediating striated muscle relaxation. The TnI subfamily contains three genes: TnI-skeletal-fast-twitch, TnI-skeletal-slow-twitch, and TnI-cardiac. This gene encodes the TnI-cardiac protein and is exclusively expressed in cardiac muscle tissues. Mutations in this gene cause familial hypertrophic cardiomyopathy type 7 (CMH7) and familial restrictive cardiomyopathy (RCM). Troponin I is useful in making a diagnosis of heart failure, and of ischemic heart disease. An elevated level of troponin is also now used as indicator of acute myocardial injury in patients hospitalized with moderate/severe Coronavirus Disease 2019 (COVID-19). Such elevation has also been associated with higher risk of mortality in cardiovascular disease patients hospitalized due to COVID-19.

## Immunogen Information

**Immunogen**  
Nature Human cTnI Protein

## Cross-Reactivity

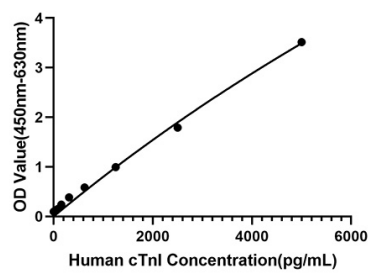
No cross-reactivity in ELISA assay with analogues.

## Assay Applications

Human cTnI Sandwich Immunoassay

		Recommended Concentration	Sample
ELISA	Capture	1-4 µg/mL	Rabbit anti-Human cTnI mAb (Cat. No. RM17655)
	Detection	0.03-0.1 µg/mL	Rabbit anti-Human cTnI mAb (Cat. No. RM17654)
	Standard	78-5000 pg/mL	Nature Human cTnI Protein

# Validation Data



This standard curve is only for demonstration purposes. A standard curve should be generated for each assay.