

Rabbit anti-Human IL-4 mAb (CAP)

Catalog No.: RM17735

Basic Information

Catalog No.
RM17735

Category
Elisa Antibody Kit

Application
ELISA

Product Information

Ig Type
Rabbit IgG

Purification
Affinity purification

Endotoxin Level

Storage
This antibody can be stored at 2°C-8°C for one month without detectable loss of activity. Antibody products are stable for twelve months from date of receipt when stored at -20°C to -80°C. Preservative-Free.


Avoid repeated freeze-thaw cycles.

Formulation
Supplied as a 0.2µm filtered solution in PBS with 0.1% BSA, pH 7.4.

Contact

 | order@abclonal.com

 | support@abclonal.com

 | www.abclonal.com

Background

Interleukin-4, is a cytokine that induces differentiation of naive helper T cells (Th0 cells to Th2 cells). In the presence of IL-4 and IL-13, cytokines that are produced in a Th-2 type response, particularly during allergy and parasitic infections, macrophages become differentially activated, And this cytokine is a ligand for interleukin 4 receptor. The interleukin 4 receptor also binds to IL13, which may contribute to many overlapping functions of this cytokine and IL13. STAT6, a signal transducer and activator of transcription, has been shown to play a central role in mediating the immune regulatory signal of this cytokine. Recently, researcher found that the cytokine IL-4 plays a key role in development of innate CD8+ T cells in the thymus of several gene-deficient mouse strains, including Itk, KLF2, CBP and Id3, without previous exposure to antigen.

Immunogen Information

Immunogen
Recombinant IL-4 Protein

Cross-Reactivity

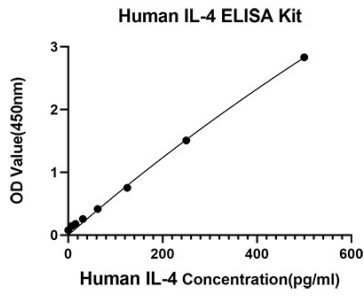
No cross-reactivity in ELISA assay with recombinant hIL-13, GM-CSF, IL-13, rIL-4, rIL-4.

Assay Applications

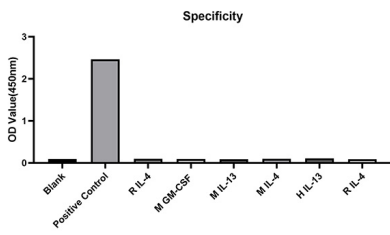
Human IL-4 Sandwich ELISA Immunoassay

	Recommended Concentration	Sample
ELISA Capture	0.5-2µg/mL	Rabbit anti-Human IL-4(CAP)(Cat. No.RM17735)
ELISA Detection	0.006-0.024µg/mL	Rabbit anti-Human IL-4(DET)(Cat. No.RM17736)
Standard	7.81-500pg/mL	Recombinant Human IL-4 Protein

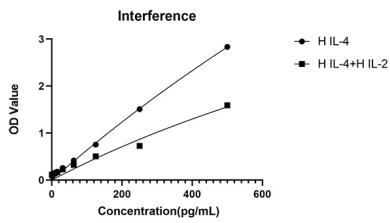
Validation Data



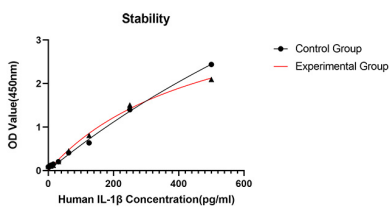
This standard curve is only for demonstration purposes. A standard curve should be generated for each assay.



No significant cross-reactivity or interference was observed.



No significant cross-reactivity or interference was observed.



Placed at 37°C for 3 days, the stability of the standard curve all conform to CV <10%.