

# Rabbit anti-Human IL-4 mAb (DET)

**Catalog No.:** RM17736

## Basic Information

**Catalog No.**  
RM17736

**Catagory**  
Elisa Antibody Kit

**Application**  
ELISA

## Product Information

**Ig Type**  
Rabbit IgG

**Purification**  
Affinity purification


**Endotoxin Level**


**Storage**  
This antibody can be stored at 2°C-8°C for one month without detectable loss of activity. Antibody products are stable for twelve months from date of receipt when stored at -20°C to -80°C. Preservative-Free.

**Avoid repeated freeze-thaw cycles.**

**Formulation**  
Supplied as a 0.2um filtered solution in PBS with 0.1% BSA, pH 7.4.

## Contact

 | [order@abclonal.com](mailto:order@abclonal.com)

 | [support@abclonal.com](mailto:support@abclonal.com)

 | [www.abclonal.com](http://www.abclonal.com)

## Background

Interleukin-4, is a cytokine that induces differentiation of naive helper T cells (Th0 cells to Th2 cells). In the presence of IL-4 and IL-13, cytokines that are produced in a Th-2 type response, particularly during allergy and parasitic infections, macrophages become differentially activated, And this cytokine is a ligand for interleukin 4 receptor. The interleukin 4 receptor also binds to IL13, which may contribute to many overlapping functions of this cytokine and IL13. STAT6, a signal transducer and activator of transcription, has been shown to play a central role in mediating the immune regulatory signal of this cytokine. Recently, researcher found that the cytokine IL-4 plays a key role in development of innate CD8+ T cells in the thymus of several gene-deficient mouse strains, including Itk, KLF2, CBP and Id3, without previous exposure to antigen.

## Immunogen Information

**Immunogen**  
Recombinant IL-4 Protein

## Cross-Reactivity

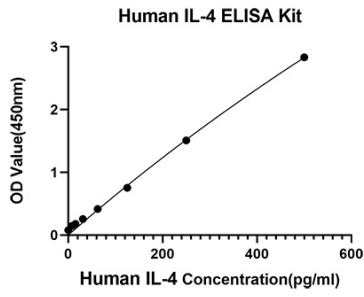
No cross-reactivity in ELISA assay with recombinant hIL-13, GM-CSF, IL-13, rIL-4, rIL-4.

## Assay Applications

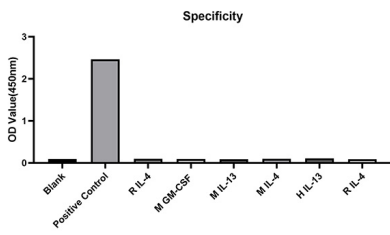
Human IL-4 Sandwich ELISA Immunoassay

	Recommended Concentration	Sample
ELISA Capture	0.5-2ug/mL	Rabbit anti-Human IL-4(CAP)(Cat. No.RM17735)
ELISA Detection	0.006-0.024ug/mL	Rabbit anti-Human IL-4(DET)(Cat. No.RM17736)
Standard	7.81-500pg/mL	Recombinant Human IL-4 Protein

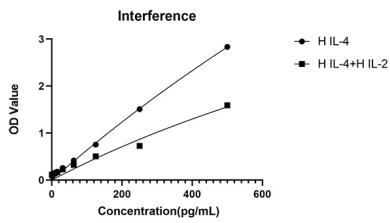
# Validation Data



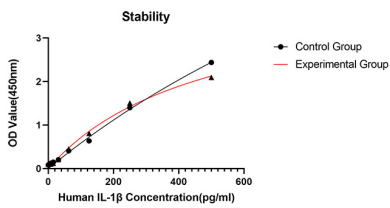
This standard curve is only for demonstration purposes. A standard curve should be generated for each assay.



No significant cross-reactivity or interference was observed.



No significant cross-reactivity or interference was observed.



Placed at 37°C for 3 days, the stability of the standard curve all conform to CV <10%.