

Rabbit anti-Human sST2 mAb (CAP)

Catalog No.: RM17778

Basic Information

Catalog No.
RM17778

Catagory
Elisa Antibody Kit

Application
ELISA

Product Information

Ig Type
Rabbit IgG

Purification
Affinity purification

Endotoxin Level

Storage
This antibody can be stored at 2°C-8°C for one month without detectable loss of activity. Antibody products are stable for twelve months from date of receipt when stored at -20°C to -80°C.
Preservative □ 0.05% ProClin 300.
Avoid repeated freeze-thaw cycles.

Formulation
Supplied as a 0.2 µm filtered solution in PBS with 0.05% ProClin 300, pH 7.4 containing Human sST2 Antibody.

Contact

 | order@abclonal.com
 | support@abclonal.com
 | www.abclonal.com

Background

Receptor for somatostatin-14 and -28. This receptor is coupled via pertussis toxin sensitive G proteins to inhibition of adenylyl cyclase. In addition it stimulates phosphotyrosine phosphatase and PLC via pertussis toxin insensitive as well as sensitive G proteins. Inhibits calcium entry by suppressing voltage-dependent calcium channels. Acts as the functionally dominant somatostatin receptor in pancreatic alpha- and beta-cells where it mediates the inhibitory effect of somatostatin-14 on hormone secretion. Inhibits cell growth through enhancement of MAPK1 and MAPK2 phosphorylation and subsequent up-regulation of CDKN1B. Stimulates neuronal migration and axon outgrowth and may participate in neuron development and maturation during brain development. Mediates negative regulation of insulin receptor signaling through PTPN6. Inactivates SSTR3 receptor function following heterodimerization

Immunogen Information

Immunogen
Recombinant Human sST2 Protein

Cross-Reactivity

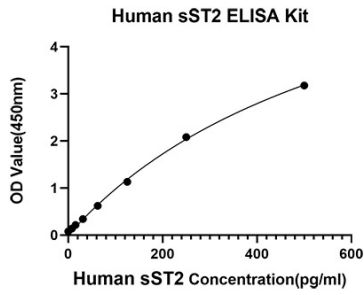
No significant cross-reactivity or interference between sST2 and analogues was observed.

Assay Applications

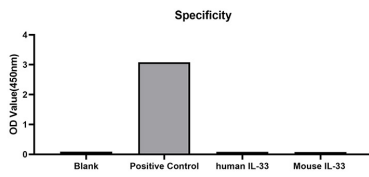
Human sST2 Sandwich ELISA Immunoassay

	Recommended Concentration	Sample
ELISA Capture	1-4 µg/mL	Rabbit anti-Human sST2(CAP)(Cat. No. RM17778)
ELISA Detection	0.015-0.06 µg/mL	Rabbit anti-Human sST2(DET)(Cat. No. RM17779)
Standard	7.8-500 pg/mL	Recombinant Human sST2 Protein

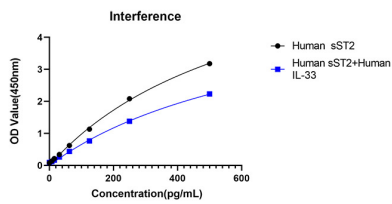
Validation Data



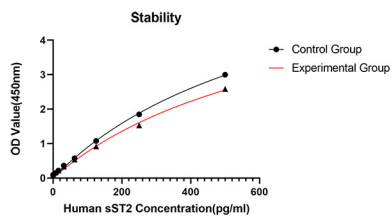
This standard curve is only for demonstration purposes. A standard curve should be generated for each assay.



From the comparison of the standard curve, it is found that ABclonal has high sensitivity.



No significant cross-reactivity or interference was observed.



Placed at 37°C for 3 days, the stability of the standard curve all conform to CV <10%.