

# Rabbit anti-Human VEGF165 (CAP)

**Catalog No.: RM17780**

## Basic Information

**Catalog No.**  
RM17780

**Catagory**  
Elisa Antibody Kit

**Application**  
ELISA

## Product Information

**Ig Type**  
Rabbit IgG

**Purification**  
Affinity purification

**Endotoxin Level**

**Storage**  
This antibody can be stored at 2°C-8°C for one month without detectable loss of activity. Antibody products are stable for twelve months from date of receipt when stored at -20°C to -80°C.  
Preservative □ 0.05% ProClin 300.  
**Avoid repeated freeze-thaw cycles.**

**Formulation**  
Supplied as a 0.2 µm filtered solution in PBS with 0.05% ProClin 300, pH 7.4 containing Human VEGF165 Antibody.

## Contact

 | [order@abclonal.com](mailto:order@abclonal.com)  
 | [support@abclonal.com](mailto:support@abclonal.com)  
 | [www.abclonal.com](http://www.abclonal.com)

## Background

Growth factor active in angiogenesis, vasculogenesis and endothelial cell growth. Induces endothelial cell proliferation, promotes cell migration, inhibits apoptosis and induces permeabilization of blood vessels. Binds to the FLT1/VEGFR1 and KDR/VEGFR2 receptors, heparan sulfate and heparin. NRP1/Neuropilin-1 binds isoforms VEGF-165 and VEGF-145. Isoform VEGF165B binds to KDR but does not activate downstream signaling pathways, does not activate angiogenesis and inhibits tumor growth. Binding to NRP1 receptor initiates a signaling pathway needed for motor neuron axon guidance and cell body migration, including for the caudal migration of facial motor neurons from rhombomere 4 to rhombomere 6 during embryonic development (By similarity).

## Immunogen Information

**Immunogen**  
Recombinant Human VEGF165 Protein

## Cross-Reactivity

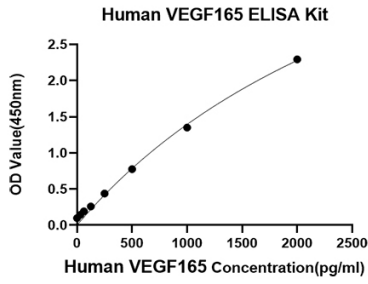
No significant cross-reactivity or interference between VEGF165 and analogues was observed.

## Assay Applications

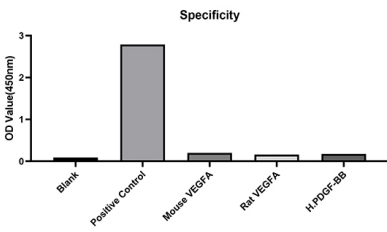
Human VEGF165 Sandwich ELISA Immunoassay

	Recommended Concentration	Sample
ELISA Capture	0.5-2 µg/mL	Rabbit anti-Human VEGF165 (CAP)(Cat. No. RM17780)
ELISA Detection	0.005-0.02 µg/mL	Rabbit anti-Human VEGF165 (DET)(Cat. No. RM17781)
Standard	31.2-2000 pg/mL	Recombinant Human VEGF165 Protein (Cat. No. RP01150)

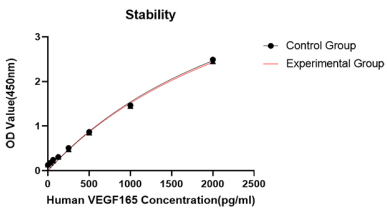
# Validation Data



This standard curve is only for demonstration purposes. A standard curve should be generated for each assay.



From the comparison of the standard curve, it is found that ABclonal has high sensitivity.



Placed at 37°C for 3 days, the stability of the standard curve all conform to CV <10%.