

# Rabbit anti- Mouse Adiponectin mAb (DET)

**Catalog No.:** RM17787

## Basic Information

**Catalog No.**  
RM17787

**Category**  
Elisa Antibody Kit

**Application**  
ELISA

## Product Information

**Ig Type**  
Rabbit IgG

**Purification**  
Affinity purification

**Endotoxin Level**

**Storage**  
Store at -20°C. Avoid freeze / thaw cycles. Preservative 0.05% ProClin 300.  
**Avoid repeated freeze-thaw cycles.**

**Formulation**  
Supplied as a 0.2µm filtered solution in PBS with 0.05% ProClin 300, pH 7.4 containing Mouse Adiponect Antibody.

## Contact

 | [order@abclonal.com](mailto:order@abclonal.com)

 | [support@abclonal.com](mailto:support@abclonal.com)

 | [www.abclonal.com](http://www.abclonal.com)

## Background

Enables hormone activity and identical protein binding activity. Involved in several processes, including detection of oxidative stress; negative regulation of cold-induced thermogenesis; and regulation of protein serine/threonine kinase activity. Acts upstream of or within with a positive effect on gene expression. Acts upstream of or within several processes, including brown fat cell differentiation; negative regulation of gluconeogenesis; and positive regulation of glucose import. Located in endoplasmic reticulum and extracellular space. Is expressed in several structures, including adipose tissue; axial musculature; gut; male reproductive gland or organ; and serum. Human ortholog(s) of this gene implicated in several diseases, including carcinoma (multiple); cardiovascular system disease (multiple); non-alcoholic fatty liver disease; primary open angle glaucoma; and type 2 diabetes mellitus. Orthologous to human ADIPOQ (adiponectin, C1Q and collagen domain containing).

## Immunogen Information

**Immunogen**  
Recombinant Mouse Adiponect Protein

## Cross-Reactivity

No cross-reactivity in ELISA assay with recombinant Rat IL-6, Human IL-6, Mouse IL-11

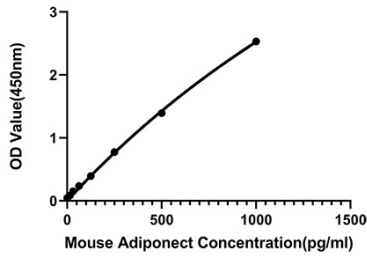
## Assay Applications

Mouse Adiponect Sandwich ELISA Immunoassay

	Recommended Concentration	Sample
ELISA Capture	0.5-2µg/mL	Rabbit anti-Mouse Adiponect(CAP)(Cat. No.RM17786)
ELISA Detection	0.0083-0.03µg/mL	Rabbit anti-Mouse Adiponect(DET)(Cat. No.RM17787)
Standard	15.6-1000pg/mL	Recombinant Mouse Adiponect Protein

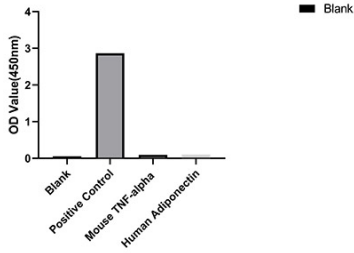
# Validation Data

### Mouse Adiponect ELISA Kit



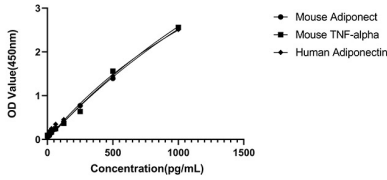
This standard curve is only for demonstration purposes. A standard curve should be generated for each assay.

### Specificity



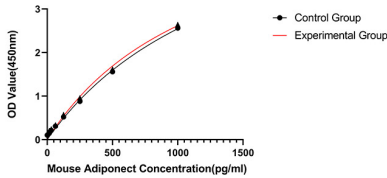
From the comparison of the standard curve, it is found that ABclonal has high sensitivity.

### Interference



No significant cross-reactivity or interference was observed.

### Stability



Placed at 37°C for 3 days, the stability of the standard curve all conform to CV <10%.