

Rabbit anti-Sheep IL-6 mAb(CAP)

Catalog No.: RM17804

Basic Information

Catalog No.
RM17804

Catagory
Elisa Antibody Kit

Application
ELISA

Product Information

Ig Type
Rabbit IgG


Purification
Affinity purification


Endotoxin Level

Storage
Store at -20°C. Avoid freeze / thaw cycles. Preservative 0.05%ProClin 300.
Avoid repeated freeze-thaw cycles.

Formulation
Supplied as a 0.2um filtered solution in PBS with 0.05%ProClin 300,PH 7.4.

Contact

 | order@abclonal.com

 | support@abclonal.com

 | www.abclonal.com

Background

Cytokine with a wide variety of biological functions in immunity, tissue regeneration, and metabolism. Binds to IL6R, then the complex associates to the signaling subunit IL6ST/gp130 to trigger the intracellular IL6-signaling pathway. The interaction with the membrane-bound IL6R and IL6ST stimulates 'classic signaling', whereas the binding of IL6 and soluble IL6R to IL6ST stimulates 'trans-signaling'. Alternatively, 'cluster signaling' occurs when membrane-bound IL6:IL6R complexes on transmitter cells activate IL6ST receptors on neighboring receiver cells. By Similarity IL6 is a potent inducer of the acute phase response. Rapid production of IL6 contributes to host defense during infection and tissue injury, but excessive IL6 synthesis is involved in disease pathology.

Immunogen Information

Immunogen
Recombinant Sheep IL-6

Cross-Reactivity

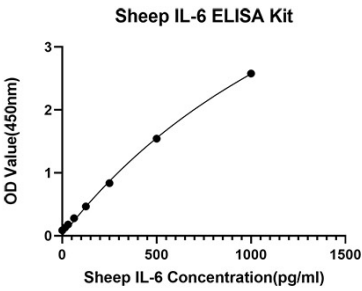
No cross-reactivity in ELISA assay with recombinant Human IL-6, Mouse IL-6, Rat IL-6

Assay Applications

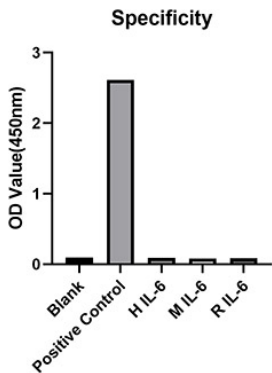
Sheep IL-6 Sandwich ELISA Immunoassay

	Recommended Concentration	Sample
ELISA Capture	0.25-1ug/mL	Rabbit anti-Sheep IL-6 (CAP)(Cat. No.RM17804)
ELISA Detection	0.08-0.02ug/mL	Rabbit anti-Sheep IL-6 (DET)(Cat. No.RM17805)
Standard	15.6-1000pg/mL	Recombinant Sheep IL-6 Protein

Validation Data



This standard curve is only for demonstration purposes. A standard curve should be generated for each assay.



From the comparison of the standard curve, it is found that ABclonal has high sensitivity.