

Rabbit anti-Human MMP3 mAb (DET)

Catalog No.: RM17820

Basic Information

Catalog No.
RM17820

Category
Elisa Antibody Kit

Application
ELISA

Product Information

Ig Type
Rabbit IgG

Purification
Affinity purification

Endotoxin Level

Storage
This antibody can be stored at 2°C-8°C for one month without detectable loss of activity. Antibody products are stable for twelve months from date of receipt when stored at -20°C to -80°C.
Preservative □ 0.05% ProClin 300.
Avoid repeated freeze-thaw cycles.

Formulation
Supplied as a 0.2µm filtered solution in PBS with 0.05% ProClin 300, pH 7.4.

Contact

 | order@abclonal.com

 | support@abclonal.com

 | www.abclonal.com

Background

Matrix metalloproteinases (MMP) are a family of proteases that target many extracellular proteins, including other proteases, growth factors, cell surface receptors, and adhesion molecules. Among these family members, MMP-2, MMP-3, MMP-7, and MMP-9 are considered important factors in normal tissue remodeling during embryonic development, injury repair, cancer invasion, angiogenesis, oncogenesis, and apoptosis. Studies have demonstrated that MMP activity is associated with cancer progression. One mechanism of MMP regulation is transcription (5). Once synthesized, MMP exists as an inactive zymogen. Maximum MMP activity requires proteolytic shearing, releasing the inhibitory pre-peptide structural domain from the full-length protein to form an active MMP.

Immunogen Information

Immunogen
Recombinant Human MMP3

Cross-Reactivity

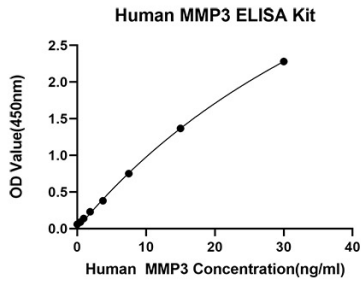
No cross-reactivity in ELISA assay with recombinant Human MMP9 □ Human MMP2 □ Human TIMP1 □ Human TIMP2

Assay Applications

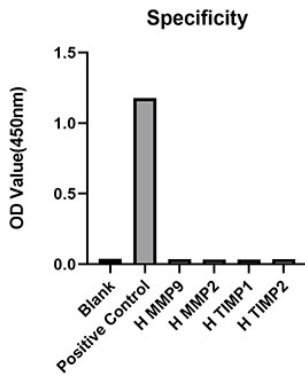
Human MMP3 Sandwich ELISA Immunoassay

	Recommended Concentration	Sample
ELISA Capture	1-4µg/mL	Rabbit anti-Human MMP3(CAP)(Cat. No.RM17819)
ELISA Detection	0.02-0.08µg/mL	Rabbit anti-Human MMP3(DET)(Cat. No.RM17820)
Standard	0.467-30ng/mL	Recombinant Human MMP3 Protein(Cat. No.RP00220)

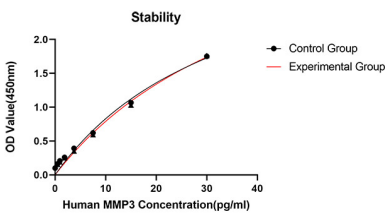
Validation Data



This standard curve is only for demonstration purposes. A standard curve should be generated for each assay.



From the comparison of the standard curve, it is found that ABclonal has high sensitivity.



Placed at 37°C for 3 days, the stability of the standard curve all conform to CV <10%.