

Rabbit anti-Rat IL-10 mAb

Catalog No.: RM17826

Basic Information

Catalog No.
RM17826

Catagory
Elisa Antibody Kit

Application
ELISA

Product Information

Ig Type
Rabbit IgG

Purification
Affinity purification

Endotoxin Level

Storage
Store at -20°C.
Avoid repeated freeze-thaw cycles.

Formulation
Supplied as a 0.2um filtered solution in PBS with 0.05%ProClin 300,PH 7.4.

Contact

 | order@abclonal.com

 | support@abclonal.com

 | www.abclonal.com

Background

Enables interleukin-10 receptor binding activity. Involved in several processes, including cellular response to estradiol stimulus; liver regeneration; and negative regulation of nitric oxide biosynthetic process. Located in extracellular space. Used to study several diseases, including lung disease (multiple); perinatal necrotizing enterocolitis; sciatic neuropathy; toxic encephalopathy; and transient cerebral ischemia. Biomarker of several diseases, including artery disease (multiple); decubitus ulcer; lung disease (multiple); obstructive sleep apnea; and postpartum depression. Human ortholog(s) of this gene implicated in several diseases, including artery disease (multiple); autoimmune disease (multiple); eye disease (multiple); gastrointestinal system cancer (multiple); and hematologic cancer (multiple). Orthologous to human IL10 (interleukin 10).

Immunogen Information

Immunogen
Recombinant Rat IL-10

Cross-Reactivity

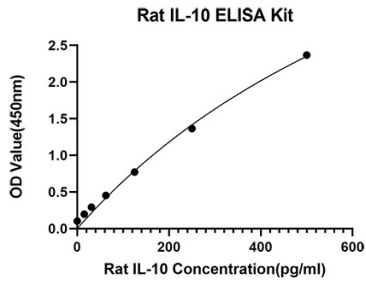
No cross-reactivity in ELISA assay withrecombinant Human IL-10,Mouse IL-10,Rat IFNG,Rat IL-1B,Rat IL-2,Rat IL-4,Rat TNFA

Assay Applications

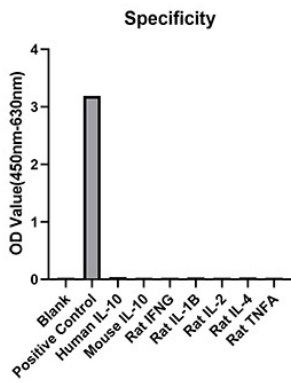
Rat IL-10 Sandwich ELISA

		Recommended Concentration	Sample
ELISA	Capture	1-4ug/mL	Rabbit anti-Rat IL-10 mAb(Cat. No.RM17825)
	Detection	0.0625-0.25ug/mL	Rabbit anti-Rat IL-10 mAb(Cat. No.RM17826)
	Standard	7.81-500pg/mL	Recombinant Rat IL-10 Protein

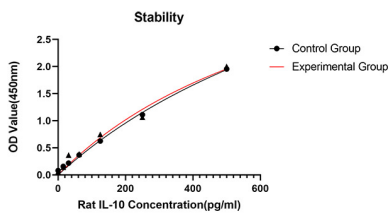
Validation Data



This standard curve is only for demonstration purposes. A standard curve should be generated for each assay.



From the comparison of the standard curve, it is found that ABclonal has high sensitivity.



Placed at 37°C for 3 days, the stability of the standard curve all conform to CV <10%.