

# Rabbit anti-Rat IL-1 beta mAb

**Catalog No.: RM17833**

## Basic Information

**Catalog No.**  
RM17833

**Catagory**  
Elisa Antibody Kit

**Application**  
ELISA

## Product Information

**Ig Type**  
Rabbit IgG


**Purification**  
Affinity purification


**Endotoxin Level**

**Storage**  
Store at -20°C. Avoid freeze / thaw cycles. Preservative[]0.05%ProClin 300.  
**Avoid repeated freeze-thaw cycles.**

**Formulation**  
Supplied as a 0.2um filtered solution in PBS with 0.05%ProClin 300,PH 7.4.

## Contact

 | [order@abclonal.com](mailto:order@abclonal.com)

 | [support@abclonal.com](mailto:support@abclonal.com)

 | [www.abclonal.com](http://www.abclonal.com)

## Background

Enables cytokine activity. Involved in several processes, including positive regulation of intracellular signal transduction; regulation of gene expression; and regulation of neurogenesis. Located in extracellular space. Used to study several diseases, including artery disease (multiple); brain disease (multiple); glomerulonephritis (multiple); interstitial lung disease (multiple); and kidney failure (multiple). Biomarker of several diseases, including artery disease (multiple); auditory system disease (multiple); brain disease (multiple); kidney failure (multiple); and lung disease (multiple). Human ortholog(s) of this gene implicated in several diseases, including autoimmune disease (multiple); blood platelet disease (multiple); eye disease (multiple); gastrointestinal system cancer (multiple); and lung disease (multiple). Orthologous to human IL1B (interleukin 1 beta).

## Immunogen Information

**Immunogen**  
Recombinant

## Cross-Reactivity

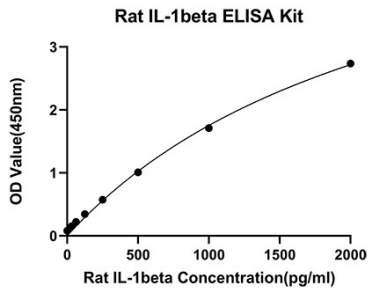
/

## Assay Applications

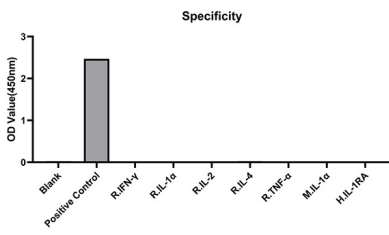
Rat IL-1 beta Sandwich ELISA

		Recommended Concentration	Sample
ELISA	Capture	0.5-4ug/mL	Rabbit anti-Rat IL-1 beta mAb(Cat. No.RM17833)
	Detection	0.016.5-0.066ug/mL	Rabbit anti-Rat IL-1 beta mAb(Cat. No.RM17834)
	Standard	31.25-2000pg/mL	Recombinant Rat IL-1 beta Protein

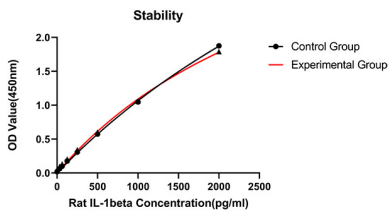
# Validation Data



This standard curve is only for demonstration purposes. A standard curve should be generated for each assay.



From the comparison of the standard curve, it is found that ABclonal has high sensitivity.



Placed at 37°C for 3 days, the stability of the standard curve all conform to CV <10%.