

Rabbit anti-Rat IL-1 β mAb (DET)

Catalog No.: RM17834

Basic Information

Catalog No.
RM17834

Category
Elisa Antibody Kit

Application
ELISA

Product Information

Ig Type
Rabbit IgG

Purification
Affinity purification

Endotoxin Level

Storage
This antibody can be stored at 2°C-8°C for one month without detectable loss of activity. Antibody products are stable for twelve months from date of receipt when stored at -20°C to -80°C.
Preservative □ 0.05% ProClin 300.
Avoid repeated freeze-thaw cycles.

Formulation
Supplied as a 0.2um filtered solution in PBS with 0.05% ProClin 300, PH 7.4.

Contact

 | order@abclonal.com
 | support@abclonal.com
 | www.abclonal.com

Background

Potent pro-inflammatory cytokine. Initially discovered as the major endogenous pyrogen, induces prostaglandin synthesis, neutrophil influx and activation, T-cell activation and cytokine production, B-cell activation and antibody production, and fibroblast proliferation and collagen production. Promotes Th17 differentiation of T-cells. Synergizes with IL12/interleukin-12 to induce IFNG synthesis from T-helper 1 (Th1) cells. Plays a role in angiogenesis by inducing VEGF production synergistically with TNF and IL6. Involved in transduction of inflammation downstream of pyroptosis: its mature form is specifically released in the extracellular milieu by passing through the gasdermin-D (GSDMD) pore.

Immunogen Information

Immunogen
Recombinant

Cross-Reactivity

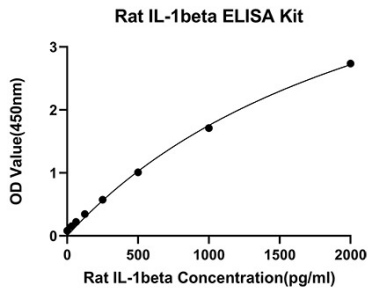
/

Assay Applications

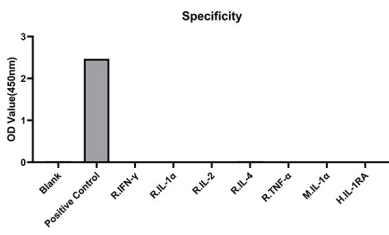
Rat IL-1B Sandwich ELISA Immunoassay

	Recommended Concentration	Sample
ELISA Capture	0.5-4ug/mL	Rabbit anti-Rat IL-1B (CAP)(Cat. No.RM17833)
ELISA Detection	0.016.5-0.066ug/mL	Rabbit anti-Rat IL-1B (DET)(Cat. No.RM17834)
Standard	31.25-2000pg/mL	Recombinant Rat IL-1B Protein

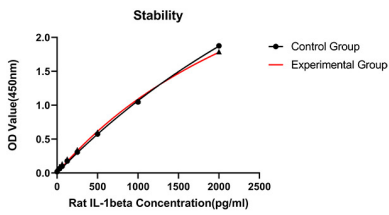
Validation Data



This standard curve is only for demonstration purposes. A standard curve should be generated for each assay.



From the comparison of the standard curve, it is found that ABclonal has high sensitivity.



Placed at 37°C for 3 days, the stability of the standard curve all conform to CV <10%.