

Rabbit anti-Human PGI₂ mAb (CAP)

Catalog No.: RM17837

Basic Information

Catalog No.
RM17837

Catagory
Elisa Antibody Kit

Application
ELISA

Product Information

Ig Type
Rabbit IgG

Purification
Affinity purification

Endotoxin Level

Storage
This antibody can be stored at 2°C-8°C for one month without detectable loss of activity. Antibody products are stable for twelve months from date of receipt when stored at -20°C to -80°C.
Preservative □ 0.05% ProClin 300.
Avoid repeated freeze-thaw cycles.

Formulation
Supplied as a 0.2µm filtered solution in PBS with 0.05% ProClin 300, PH 7.4.

Contact

 | order@abclonal.com

 | support@abclonal.com

 | www.abclonal.com

Background

Pepsinogen II, as precursors of pepsin, are produced by gastric mucosa and released into the gastric lumen and peripheral circulation. The advanced inflammation of gastric mucosa and its progression toward atrophic gastritis (AG) in the corpus is associated with a change in serum biomarkers pepsinogen II. (PMID:23496362). Pepsinogen II also known as progastricsin or PGC (pepsinogen C), is an aspartic protease expressed primarily in gastric chief cells and is a novel marker of type 2 cells with advantages over many of the current markers used to identify type 2 cells in the developing lung. It is involved in proteolysis and peptidolysis.

Immunogen Information

Immunogen
Recombinant Human PGI₂

Cross-Reactivity

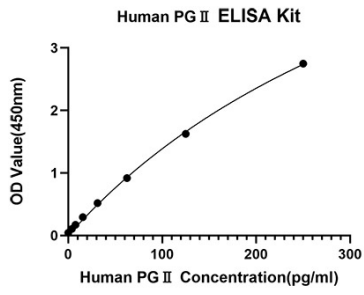
/

Assay Applications

Human PGI₂ Sandwich ELISA Immunoassay

	Recommended Concentration	Sample
ELISA Capture	0.5-4µg/mL	Rabbit anti-Human PGI ₂ (CAP)(Cat. No.RM17837)
ELISA Detection	0.02-0.08µg/mL	Rabbit anti-Human PGI ₂ (DET)(Cat. No.RM17838)
Standard	3.9-250pg/mL	Recombinant Human PGI ₂ Protein

Validation Data



This standard curve is only for demonstration purposes. A standard curve should be generated for each assay.