

Rabbit anti-Human VEGF121 mAb (CAP)

Catalog No.: RM17839

Basic Information

Catalog No.
RM17839

Catagory
Elisa Antibody Kit

Application
ELISA

Product Information

Ig Type
Rabbit IgG

Purification
Affinity purification

Endotoxin Level

Storage
This antibody can be stored at 2°C-8°C for one month without detectable loss of activity. Antibody products are stable for twelve months from date of receipt when stored at -20°C to -80°C.
Preservative □ 0.05% ProClin 300.
Avoid repeated freeze-thaw cycles.

Formulation
Supplied as a 0.2um filtered solution in PBS with 0.05% ProClin 300, PH 7.4.

Contact

 | order@abclonal.com

 | support@abclonal.com

 | www.abclonal.com

Background

Human VEGF121, also known as Vascular endothelial growth factor A, VEGFA, Vascular permeability factor, VPF and VEGF, is a homodimeric, heparin-binding glycoprotein which belongs to the platelet-derived growth factor (PDGF)/vascular endothelial growth factor (VEGF) family. VEGF-A is a glycosylated mitogen that specifically acts on endothelial cells and has various effects, including mediating increased vascular permeability, inducing angiogenesis, vasculogenesis, permeabilization of blood vessels and endothelial cell growth, increasing microvascular permeability, promoting cell migration and inhibiting apoptosis. Alternatively spliced transcript variants of VEGF-A encode either secreted or cell-associated isoforms. The lymphangiogenesis may be promoted by upregulation of VEGF121, which may in turn act in part via induction of VEGF-C. It binds to the FLT1/VEGFR1 and KDR/VEGFR2 receptors, heparan sulfate and heparin. NRP1/Neuropilin-1 binds isoforms VEGF-165 and VEGF-145. Isoform VEGF165B binds to KDR but does not activate downstream sig...

Immunogen Information

Immunogen
Recombinant Human VEGF121

Cross-Reactivity

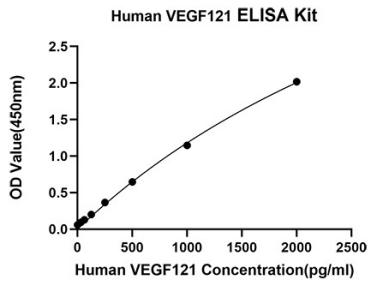
Has cross-reactivity in ELISA with
Mouse VEGFA, Rat VEGFA
;No cross-reactivity in ELISA assay with recombinant
H.PDGF-BB □

Assay Applications

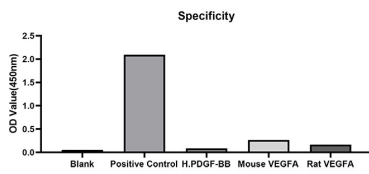
Human VEGF121 Sandwich ELISA Immunoassay

	Recommended Concentration	Sample
ELISA Capture	0.5-4ug/mL	Rabbit anti-Human VEGF121 (CAP)(Cat. No.RM17839)
ELISA Detection	0.0025-0.01ug/mL	Rabbit anti-Human VEGF121 (DET)(Cat. No.RM17840)
Standard	31.25-2000pg/mL	Recombinant Human VEGF121 Protein(Cat. No.RP01162)

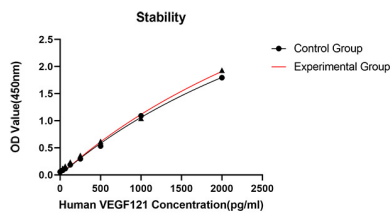
Validation Data



This standard curve is only for demonstration purposes. A standard curve should be generated for each assay.



From the comparison of the standard curve, it is found that ABclonal has high sensitivity.



Placed at 37°C for 3 days, the stability of the standard curve all conform to CV <10%.