

Rabbit anti-Mouse IL-1 alpha mAb (CAP)

Catalog No.: RM17853

Basic Information

Catalog No.
RM17853

Category
Elisa Antibody Kit

Application
ELISA

Product Information

Ig Type
Rabbit IgG


Purification
Affinity purification


Endotoxin Level

Storage
Store at -20°C. Avoid freeze / thaw cycles. Preservative 0.05%ProClin 300.
Avoid repeated freeze-thaw cycles.

Formulation
Supplied as a 0.2um filtered solution in PBS with 0.05%ProClin 300,PH 7.4.

Contact

 | order@abclonal.com

 | support@abclonal.com

 | www.abclonal.com

Background

IL-1 alpha (Interleukin-1 alpha) is a cytokine that is induced during microbial exposure and promotes the release of multiple inflammatory mediators and acute phase proteins. It also supports hematopoietic stem cell expansion, promotes neutrophil mobilization from the bone marrow, and promotes osteoclast formation. IL-1 alpha signals through a receptor complex composed of IL-1 RI and IL-1 RAcP. It also binds the decoy receptor IL-1 RII which associates with IL-1 RAcP but does not transduce signaling.

Immunogen Information

Immunogen
Recombinant Mouse IL-1 alpha Protein

Cross-Reactivity

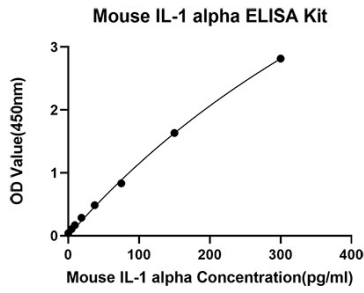
No cross-reactivity in ELISA assay with recombinant Human IL-1 alpha /Rat IL-1 beta/Mouse G-CSF/Mouse IL-4/Mouse IL-5/Mouse IL-6/Mouse IL-9/Mouse IL-10/Mouse IL-13/Mouse CXCL1/KC /Mouse Leptin /Mouse TNF-alpha

Assay Applications

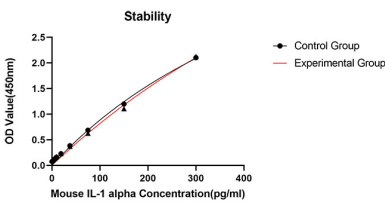
Mouse IL-1 alpha Sandwich ELISA Immunoassay

| | Recommended Concentration | Sample |
|-----------------|---------------------------|---|
| ELISA Capture | 1-4ug/mL | Rabbit anti-Mouse IL-1 alpha(CAP)(Cat. No.RM17853) |
| ELISA Detection | 0.03-0.12ug/mL | Rabbit anti-Mouse IL-1 alpha(DET)(Cat. No.RM17854) |
| Standard | 4.68-300pg/mL | Recombinant Mouse IL-1 alpha Protein(Cat. No.RP01319) |

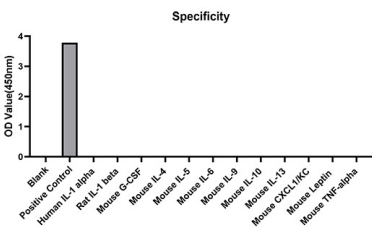
Validation Data



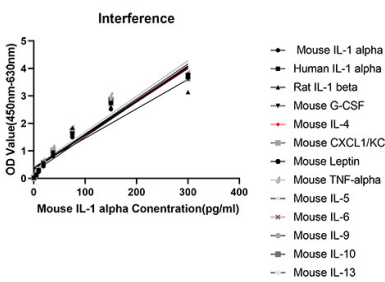
This standard curve is only for demonstration purposes. A standard curve should be generated for each assay.



From the comparison of the standard curve, it is found that ABclonal has high sensitivity.



No significant cross-reactivity or interference was observed.



Placed at 37°C for 3 days, the stability of the standard curve all conform to CV <10%.