

# Rabbit anti-Mouse IL-1 alpha mAb (DET)

**Catalog No.: RM17854**

## Basic Information

**Catalog No.**  
RM17854

**Category**  
Elisa Antibody Kit

**Application**  
ELISA

## Product Information

**Ig Type**  
Rabbit IgG

**Purification**  
Affinity purification

**Endotoxin Level**

**Storage**  
This antibody can be stored at 2°C-8°C for one month without detectable loss of activity. Antibody products are stable for twelve months from date of receipt when stored at -20°C to -80°C.  
Preservative □ 0.05% ProClin 300.  
**Avoid repeated freeze-thaw cycles.**

**Formulation**  
Supplied as a 0.2µm filtered solution in PBS with 0.05% ProClin 300, PH 7.4.

## Contact

 | [order@abclonal.com](mailto:order@abclonal.com)

 | [support@abclonal.com](mailto:support@abclonal.com)

 | [www.abclonal.com](http://www.abclonal.com)

## Background

IL-1 alpha (Interleukin-1 alpha) is a cytokine that is induced during microbial exposure and promotes the release of multiple inflammatory mediators and acute phase proteins. It also supports hematopoietic stem cell expansion, promotes neutrophil mobilization from the bone marrow, and promotes osteoclast formation. IL-1 alpha signals through a receptor complex composed of IL-1 RI and IL-1 RAcP. It also binds the decoy receptor IL-1 RII which associates with IL-1 RAcP but does not transduce signaling.

## Immunogen Information

**Immunogen**  
Recombinant Mouse IL-1 alpha Protein

## Cross-Reactivity

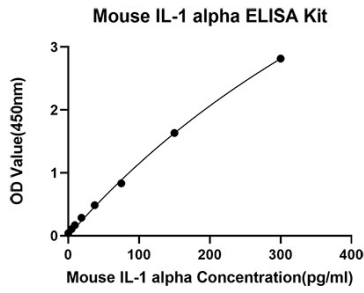
No cross-reactivity in ELISA assay with recombinant Human IL-1 alpha /Rat IL-1 beta/Mouse G-CSF/Mouse IL-4/Mouse IL-5/Mouse IL-6/Mouse IL-9/Mouse IL-10/Mouse IL-13/Mouse CXCL1/KC /Mouse Leptin /Mouse TNF-alpha

## Assay Applications

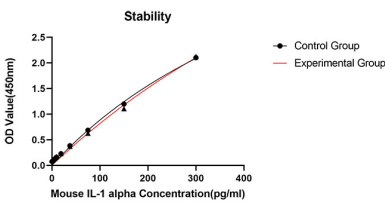
Mouse IL-1 alpha Sandwich ELISA Immunoassay

	Recommended Concentration	Sample
ELISA Capture	1-4µg/mL	Rabbit anti-Mouse IL-1 alpha(CAP)(Cat. No.RM17853)
ELISA Detection	0.03-0.12µg/mL	Rabbit anti-Mouse IL-1 alpha(DET)(Cat. No.RM17854)
Standard	4.68-300pg/mL	Recombinant Mouse IL-1 alpha Protein(Cat. No.RP01319)

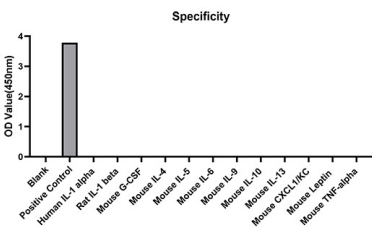
# Validation Data



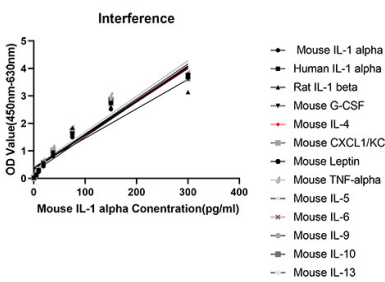
This standard curve is only for demonstration purposes. A standard curve should be generated for each assay.



From the comparison of the standard curve, it is found that ABclonal has high sensitivity.



No significant cross-reactivity or interference was observed.



Placed at 37°C for 3 days, the stability of the standard curve all conform to CV <10%.