

Rabbit anti-Human IL-33 mAb (CAP)

Catalog No.: RM17857

Basic Information

Catalog No.
RM17857

Catagory
Elisa Antibody Kit

Application
ELISA,Multiplex,CLIA

Product Information

Ig Type
Rabbit IgG

Purification
Affinity purification


Endotoxin Level

Storage
Store at -20°C.
Avoid repeated freeze-thaw cycles.

Formulation
Supplied as a 0.2um filtered solution in PBS with 0.05%ProClin 300,PH 7.4.

Contact

 | order@abclonal.com

 | support@abclonal.com

 | www.abclonal.com

Background

The protein encoded by this gene is a cytokine that binds to the IL1RL1/ST2 receptor. The encoded protein is involved in the maturation of Th2 cells and the activation of mast cells, basophils, eosinophils and natural killer cells. Several transcript variants encoding different isoforms have been found for this gene.

Immunogen Information

Immunogen
Recombinant Human IL-33

Cross-Reactivity

No cross-reactivity in ELISA assay with recombinant Human IL-18, Human IL-1 α , Human IL-1 β , Human IL-1ra, Mouse IL-1 β , Rat IL-1 α , Rat IL-1 β

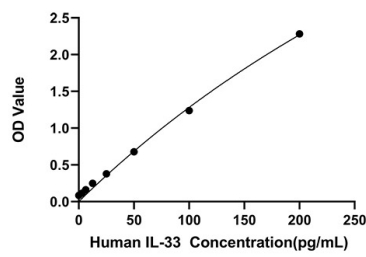
Assay Applications

Human IL-33 Sandwich Immunoassay

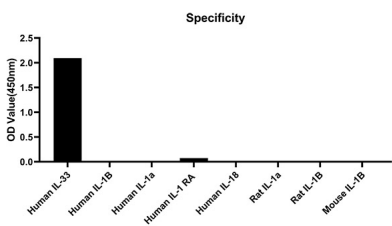
		Recommended Concentration	Sample
ELISA	Capture	0.5-2ug/mL	Rabbit anti-Human IL-33 mAb(Cat. No.RM17857)
	Detection	0.033-0.13ug/mL	Rabbit anti-Human IL-33 mAb(Cat. No.RM17858)
	Standard	3.125-200pg/mL	Recombinant Human IL-33 Protein(Cat. No.RP00019)

Multiplex	Capture	3-20ug/mL	Rabbit anti-Human IL-33 mAb(Cat. No.RM17857)
	Detection	0.017-2ug/mL	Rabbit anti-Human IL-33 mAb(Cat. No.RMK0227)
	Standard	6.86-5000pg/mL	Recombinant Human IL-33 Protein
CLIA	Capture	1-4ug/mL	Rabbit anti-Human IL-33 mAb(Cat. No.RM17857)
	Detection	0.5-2ug/mL	Rabbit anti-Human IL-33 mAb(Cat. No.RM17858)
	Standard	0.5-5000pg/mL	Recombinant Human IL-33 Protein(Cat. No.RP00019)

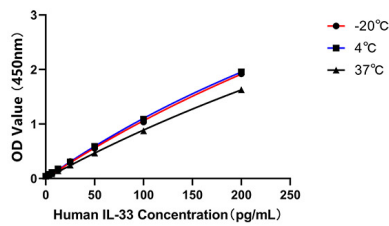
Validation Data



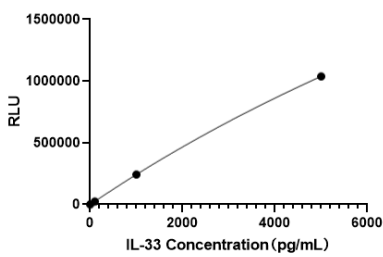
This standard curve is only for demonstration purposes. A standard curve should be generated for each assay.



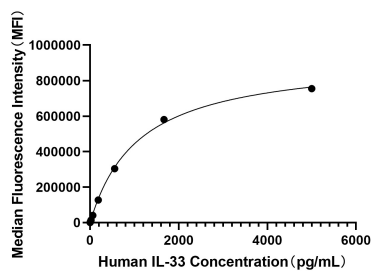
From the comparison of the standard curve, it is found that ABclonal has high sensitivity.



Placed at 37°C for 3 days, the stability of the standard curve all conform to CV <10%.



This standard curve is only for demonstration purposes. A standard curve should be generated for each assay.



This standard curve is only for demonstration purposes. A standard curve should be generated for each assay.