

# Rabbit anti-Mouse IL-4 mAb (DET)

**Catalog No.: RM17871**

## Basic Information

**Catalog No.**  
RM17871

**Catagory**  
Elisa Antibody Kit

**Application**  
ELISA

## Product Information

**Ig Type**  
Rabbit IgG


**Purification**  
Affinity purification


**Endotoxin Level**

**Storage**  
Store at -20°C. Avoid freeze / thaw cycles. Preservative 0.05%ProClin 300.  
**Avoid repeated freeze-thaw cycles.**

**Formulation**  
Supplied as a 0.2um filtered solution in PBS with 0.05%ProClin 300,PH 7.4.

## Contact

 | order@abclonal.com

 | support@abclonal.com

 | www.abclonal.com

## Background

Enables cytokine activity. Involved in several processes, including innate immune response in mucosa; negative regulation of white fat cell proliferation; and regulation of gene expression. Acts upstream of or within several processes, including T-helper cell differentiation; positive regulation of macromolecule metabolic process; and regulation of leukocyte activation. Located in external side of plasma membrane and extracellular space. Is expressed in several structures, including brain; colon; hemolymphoid system; liver; and placenta. Used to study Sjogren's syndrome; atopic dermatitis; and type 1 diabetes mellitus. Human ortholog(s) of this gene implicated in several diseases, including asthma (multiple); autoimmune disease (multiple); hepatitis B; hepatitis C; and pancreatic cancer (multiple). Orthologous to human IL4 (interleukin 4).

## Immunogen Information

**Immunogen**  
Recombinant Mouse IL-4 protein

## Cross-Reactivity

No cross-reactivity in ELISA assay with recombinant Mouse GM-CSF □ Mouse G-CSF □ Mouse IFN-gamma □ Mouse IFN-beta □ Mouse IL-1 beta □ Mouse IL-2 □ Mouse IL-6 □ Mouse IL-10 □ Mouse IL-5 □ Mouse IL-9 □ Mouse CXCL1/KC □ Mouse TNF-alpha □ Human IL-4 □ Rat IL-4

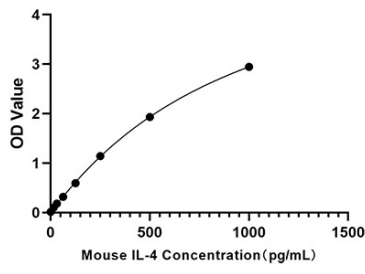
## Assay Applications

Mouse IL-4 Sandwich ELISA Immunoassay

	Recommended Concentration	Sample
ELISA Capture	1-4ug/mL	Rabbit anti-Mouse IL-4 (CAP)(Cat. No.RM17870)
ELISA Detection	0.007-0.028ug/mL	Rabbit anti-Mouse IL-4 (DET)(Cat. No.RM17871)
Standard	15.6-1000pg/mL	Recombinant Mouse IL-4 Protein(Cat. No.RP01161)

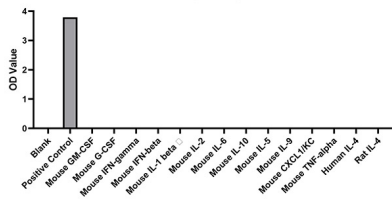
# Validation Data

**Mouse IL-4 ELISA Kit**



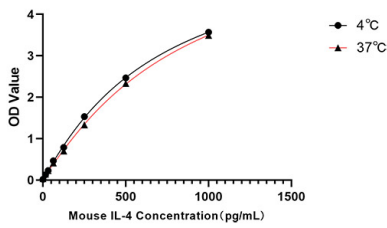
This standard curve is only for demonstration purposes. A standard curve should be generated for each assay.

**Specificity**



From the comparison of the standard curve, it is found that ABclonal has high sensitivity.

**Stability**



Placed at 37°C for 3 days, the stability of the standard curve all conform to CV <10%.