

# Rabbit anti-Human IL-2R mAb (CAP)

**Catalog No.:** RM17896

## Basic Information

**Catalog No.**  
RM17896

**Category**  
Elisa Antibody Kit

**Application**  
ELISA

## Product Information

**Ig Type**  
Rabbit IgG

**Purification**  
Affinity purification

**Endotoxin Level**

**Storage**  
Store at -20°C.  
**Avoid repeated freeze-thaw cycles.**

**Formulation**  
Supplied as a 0.2um filtered solution in PBS with 0.05%ProClin 300,PH 7.4.

## Contact

 | [order@abclonal.com](mailto:order@abclonal.com)

 | [support@abclonal.com](mailto:support@abclonal.com)

 | [www.abclonal.com](http://www.abclonal.com)

## Background

The interleukin 2 (IL2) receptor alpha (IL2RA) and beta (IL2RB) chains, together with the common gamma chain (IL2RG), constitute the high-affinity IL2 receptor. Homodimeric alpha chains (IL2RA) result in low-affinity receptor, while homodimeric beta (IL2RB) chains produce a medium-affinity receptor. Normally an integral-membrane protein, soluble IL2RA has been isolated and determined to result from extracellular proteolysis. Alternately-spliced IL2RA mRNAs have been isolated, but the significance of each is presently unknown. Mutations in this gene are associated with interleukin 2 receptor alpha deficiency. Patients with severe Coronavirus Disease 2019 (COVID-19), the disease caused by the novel severe acute respiratory syndrome coronavirus 2 (SARS-CoV-2), have significantly elevated levels of IL2R in their plasma. Similarly, serum IL-2R levels are found to be elevated in patients with different types of carcinomas. Certain IL2RA and IL2RB gene polymorphisms have been associated with lung cancer risk.

## Immunogen Information

**Immunogen**  
Recombinant Human IL-2R alpha Protein

## Cross-Reactivity

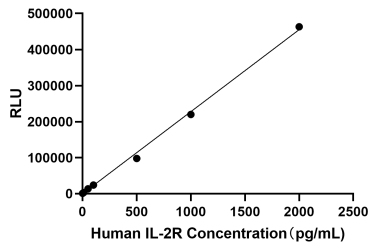
No cross-reactivity in ELISA with recombinant Human IFN- $\gamma$ , Human IL-1 $\alpha$ , Human IL-1 $\beta$ , Human IL-1ra, Human IL-2, Human IL-3, Human IL-4, Human IL-5, Human IL-6, Human IL-8, Human IL-9, Human IL-10, Human IL-11, Human IL-12, Human IL-13, Human M-CSF, Human TGF- $\beta$ 1, Human TNF- $\alpha$ , Mouse IL-1 $\beta$ , Mouse IL-4, Mouse IL-5, Mouse IL-6, Mouse IL-9, Mouse IL-10, Mouse IL-13, Mouse TNF- $\alpha$

## Assay Applications

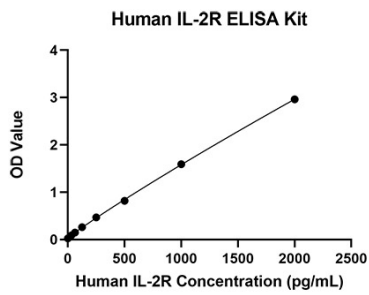
Human IL-2R Sandwich Immunoassay

		Recommended Concentration	Sample
ELISA	Capture	1-4ug/mL	Rabbit anti-Human IL-2R mAb(Cat. No.RM17896)
	Detection	0.01-0.04ug/mL	Rabbit anti-Human IL-2R mAb(Cat. No.RM17897)
	Standard	31.25-2000pg/mL	Recombinant Human IL-2R Protein

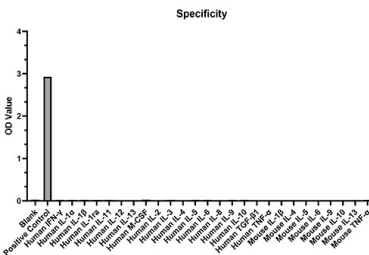
# Validation Data



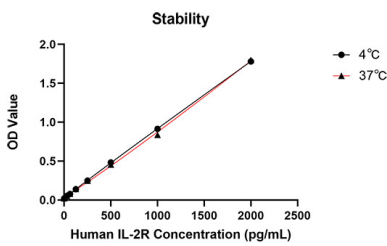
This standard curve is only for demonstration purposes. A standard curve should be generated for each assay.



This standard curve is only for demonstration purposes. A standard curve should be generated for each assay.



No significant cross-reactivity or interference was observed.



Placed at 37°C for 3 days, the stability of the standard curve all conform to CV <10%.