

Rabbit anti-Rat IFN-gamma mAb (CAP)

Catalog No.: RM17900

Basic Information

Catalog No.
RM17900

Category
Elisa Antibody Kit

Application
ELISA

Product Information

Ig Type
Rabbit IgG

Purification
Affinity purification

Endotoxin Level

Storage
Store at -20°C.
Avoid repeated freeze-thaw cycles.

Formulation
Supplied as a 0.2um filtered solution in PBS with 0.05%ProClin 300,PH 7.4.

Contact

 | order@abclonal.com

 | support@abclonal.com

 | www.abclonal.com

Background

Predicted to enable cytokine activity. Involved in several processes, including negative regulation of cell population proliferation; positive regulation of NMDA glutamate receptor activity; and positive regulation of macromolecule metabolic process. Located in several cellular components, including extracellular space; neuron projection; and perikaryon. Used to study several diseases, including Chagas disease; allergic conjunctivitis; allergic rhinitis; renal fibrosis; and ureteral obstruction. Biomarker of several diseases, including abdominal aortic aneurysm; autoimmune thyroiditis; pulpitis; tongue squamous cell carcinoma; and visual epilepsy. Human ortholog(s) of this gene implicated in several diseases, including ataxia telangiectasia; autoimmune disease (multiple); eczema herpeticum; factor VIII deficiency; and leukemia (multiple). Orthologous to human IFNG (interferon gamma).

Immunogen Information

Immunogen
Recombinant Rat IFN-gamma protein

Cross-Reactivity

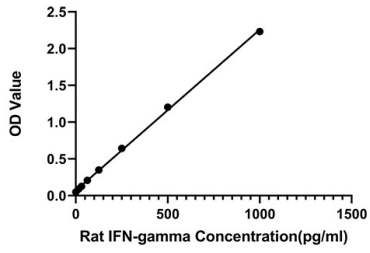
No cross-reactivity in ELISA with recombinant Rat IL-1 β , Rat IL-2, Rat IL-4, Rat IL-6, Rat IL-10, Rat TNF- α , Human IFN- γ , Mouse IFN- γ

Assay Applications

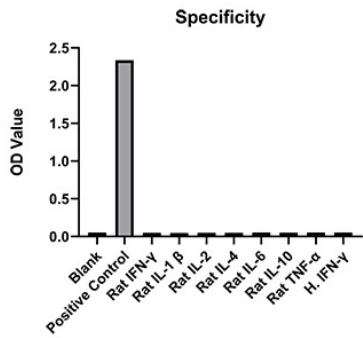
Human Rat IFN-gamma Sandwich Immunoassay

		Recommended Concentration	Sample
ELISA	Capture	0.5-4ug/mL	Rabbit anti-Rat IFN-gamma mAb(Cat. No.RM17900)
	Detection	0.333-0.0833ug/mL	Rabbit anti-Rat IFN-gamma mAb(Cat. No.RM17901)
	Standard	15.6-1000pg/mL	Recombinant Rat IFN-gamma Protein

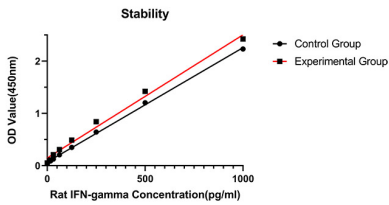
Validation Data



This standard curve is only for demonstration purposes. A standard curve should be generated for each assay.



No significant cross-reactivity or interference was observed.



Placed at 37°C for 3 days, the stability of the standard curve all conform to CV <10%.