

Rabbit anti-Human Monocyte Chemotactic Protein 1 mAb (DET)

Catalog No.: RM17903

Basic Information

Catalog No.
RM17903

Catagory
Elisa Antibody Kit

Application
ELISA

Product Information

Ig Type
Rabbit IgG

Purification
Affinity purification

Endotoxin Level

Storage
This antibody can be stored at 2°C-8°C for one month without detectable loss of activity. Antibody products are stable for twelve months from date of receipt when stored at -20°C to -80°C.
Preservative 0.05% ProClin 300.
Avoid repeated freeze-thaw cycles.

Formulation
Supplied as a 0.2um filtered solution in PBS with 0.05% ProClin 300, PH 7.4.

Contact

 | order@abclonal.com

 | support@abclonal.com

 | www.abclonal.com

Background

Monocyte Chemotactic Protein-1 (MCP-1), also known as CCL2, MCAF and TDCF, is a heparin binding, 10-14 kDa member of the beta or CC family of chemokines. Currently, there are at least 26 human CC family members that generally range from 8-12 kDa in size. The majority of these chemokines are found on human chromosome 17 and all contain a typical three β -sheet/one α -helix structure. Human MCP-1 is synthesized as a 99 amino acid (aa) precursor that contains a 23 aa signal sequence coupled to a 76 aa mature region. The mature region contains a receptor binding and dimerization N-terminus plus a glycosaminoglycan (GAG)-binding C-terminus. MCP-1 undergoes O-linked but not N-linked glycosylation, and variability in the pattern of glycosylation accounts for variability in its MW. Heavily glycosylated forms of MCP-1 show increased half-life, while lightly glycosylated forms of MCP-1 show increased bioactivity. MCP-1 circulates as a monomer and is also suggested to form dimers and/or multimers. The monomer is considered the predominant form.

Immunogen Information

Immunogen
Recombinant Human Monocyte Chemotactic Protein 1 protein

Cross-Reactivity

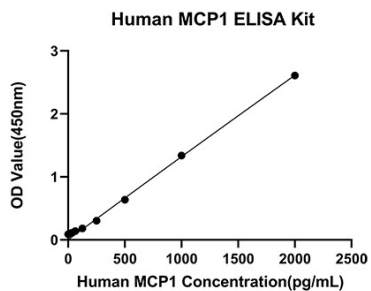
No cross-reactivity in ELISA assay with recombinant Human IL-3, Human IL-4, Human IL-5, Human IL-6, Human IL-8, Human IL-10, Human IL-12, Human IFN- α

Assay Applications

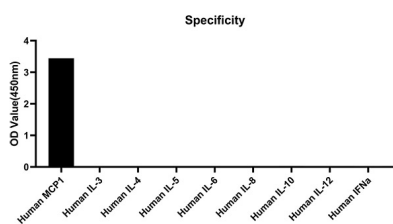
Human Monocyte Chemotactic Protein 1 Sandwich ELISA Immunoassay

	Recommended Concentration	Sample
ELISA Capture	0.5-2ug/mL	Rabbit anti-Human Monocyte Chemotactic Protein 1 (CAP)(Cat. No.RM17902)
ELISA Detection	0.0025-0.01ug/mL	Rabbit anti-Human Monocyte Chemotactic Protein 1 (DET)(Cat. No.RM17903)
Standard	31.25-2000pg/mL	Recombinant Human Monocyte Chemotactic Protein 1 Protein

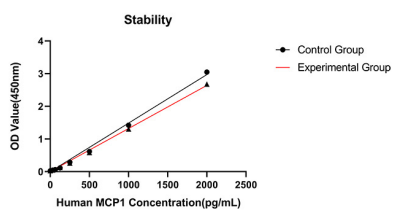
Validation Data



This standard curve is only for demonstration purposes. A standard curve should be generated for each assay.



No significant cross-reactivity or interference was observed.



Placed at 37°C for 3 days, the stability of the standard curve all conform to CV <10%.