

# Rabbit anti-Mouse IL-17A mAb

Catalog No.: RM17904

## Basic Information

**Catalog No.**  
RM17904

**Catagory**  
Elisa Antibody Kit

**Application**  
ELISA,Multiplex

## Product Information

**Ig Type**  
Rabbit IgG

**Purification**  
Affinity purification

**Endotoxin Level**

**Storage**  
Store at -20°C.  
**Avoid repeated freeze-thaw cycles.**

**Formulation**  
Supplied as a 0.2um filtered solution in PBS with 0.05%ProClin 300,PH 7.4.

## Contact

 | order@abclonal.com

 | support@abclonal.com

 | www.abclonal.com

## Background

This gene encodes a pro-inflammatory cytokine that is a member of the interleukin-17 family. The encoded protein plays a central role in host defense against diverse pathogens. The encoded protein is produced by activated T-cells and certain cell types of innate immune system. The active protein functions as either a homodimer with other interleukin-17 family members and signals through the interleukin-17 receptor to induce inflammatory cytokine production. Aberrant expression of this gene is associated with autoinflammatory diseases including rheumatoid arthritis, psoriasis and multiple sclerosis.

## Immunogen Information

**Immunogen**  
Recombinant Mouse IL-17A protein

## Cross-Reactivity

No cross-reactivity in ELISA assay withrecombinant Mouse. GM-CSF ,Mouse IL-1a,Mouse IL-1a,Mouse IL-2,Mouse IL-4,Mouse IL-5,Mouse IL-6,Mouse IL-9□Mouse IL-10□Mouse IL-12□Mouse Leptin□Mouse TNF-α□Mouse IL-1β□Human IL-17

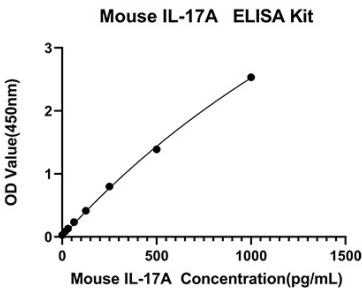
## Assay Applications

Mouse IL-17A Sandwich ELISA/Multiplex

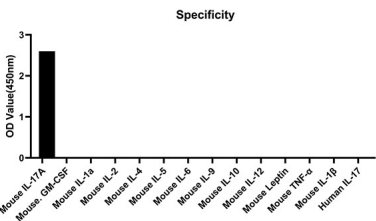
		Recommended Concentration	Sample
ELISA	Capture	0.25-1ug/mL	Rabbit anti-Mouse IL-17A mAb(Cat. No.RM17904)
	Detection	0.0025-0.01ug/mL	Rabbit anti-Mouse IL-17A mAb(Cat. No.RM17905)
	Standard	15.63-1000pg/mL	Recombinant Mouse IL-17A Protein

Multiplex	Capture	3-20ug/mL	Rabbit anti-Mouse IL-17A mAb(Cat. No.RM17904)
	Detection	0.017-2ug/mL	Rabbit anti-Mouse IL-17A mAb(Cat. No.RM17967)
	Standard	6.86-5000pg/mL	Recombinant Mouse IL-17A Protein

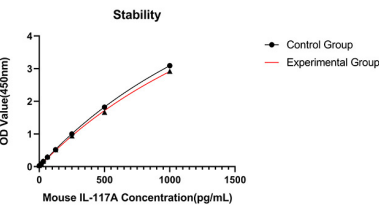
Validation Data



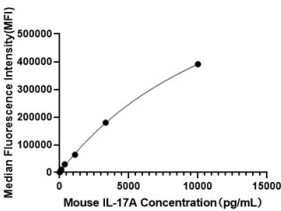
This standard curve is only for demonstration purposes. A standard curve should be generated for each assay.



No significant cross-reactivity or interference was observed.



Placed at 37°C for 3 days, the stability of the standard curve all conform to CV <10%.



This standard curve is only for demonstration purposes. A standard curve should be generated for each assay.