

# Rabbit anti-Mouse IL-17A mAb (DET)

**Catalog No.: RM17905**

## Basic Information

**Catalog No.**  
RM17905

**Catagory**  
Elisa Antibody Kit

**Application**  
ELISA

## Product Information

**Ig Type**  
Rabbit IgG

**Purification**  
Affinity purification


**Endotoxin Level**

**Storage**  
Store at -20°C. Avoid freeze / thaw cycles. Preservative 0.05%ProClin 300.  
**Avoid repeated freeze-thaw cycles.**

**Formulation**  
Supplied as a 0.2um filtered solution in PBS with 0.05%ProClin 300,PH 7.4.

## Contact

 | [order@abclonal.com](mailto:order@abclonal.com)

 | [support@abclonal.com](mailto:support@abclonal.com)

 | [www.abclonal.com](http://www.abclonal.com)

## Background

This gene encodes a pro-inflammatory cytokine that is a member of the interleukin-17 family. The encoded protein plays a central role in host defense against diverse pathogens. The encoded protein is produced by activated T-cells and certain cell types of innate immune system. The active protein functions as either a homodimer with other interleukin-17 family members and signals through the interleukin-17 receptor to induce inflammatory cytokine production. Aberrant expression of this gene is associated with autoinflammatory diseases including rheumatoid arthritis, psoriasis and multiple sclerosis.

## Immunogen Information

**Immunogen**  
Recombinant Mouse IL-17A protein

## Cross-Reactivity

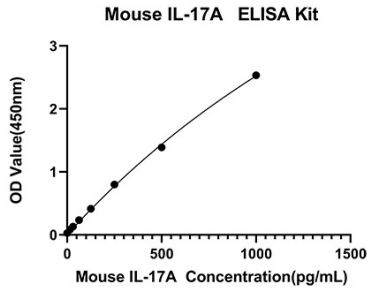
No cross-reactivity in ELISA assay with recombinant Mouse. GM-CSF ,Mouse IL-1a, Mouse IL-1a, Mouse IL-2, Mouse IL-4, Mouse IL-5, Mouse IL-6, Mouse IL-9, Mouse IL-10, Mouse IL-12, Mouse Leptin, Mouse TNF-α, Mouse IL-1β, Human IL-17

## Assay Applications

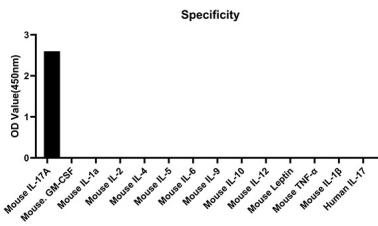
Mouse IL-17A Sandwich ELISA Immunoassay

	Recommended Concentration	Sample
ELISA Capture	0.25-1ug/mL	Rabbit anti-Mouse IL-17A (CAP)(Cat. No.RM17904)
ELISA Detection	0.0025-0.01ug/mL	Rabbit anti-Mouse IL-17A (DET)(Cat. No.RM17905)
Standard	15.63-1000pg/mL	Recombinant Mouse IL-17A Protein

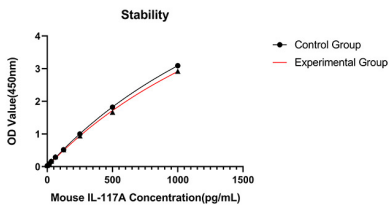
# Validation Data



This standard curve is only for demonstration purposes. A standard curve should be generated for each assay.



No significant cross-reactivity or interference was observed.



Placed at 37°C for 3 days, the stability of the standard curve all conform to CV <10%.