

# Rabbit anti-Human CD40 mAb (CAP)

**Catalog No.: RM17915**

## Basic Information

**Catalog No.**  
RM17915

**Catagory**  
Elisa Antibody Kit

**Application**  
ELISA

## Product Information

**Ig Type**  
Rabbit IgG

**Purification**  
Affinity purification


**Endotoxin Level**


**Storage**  
This antibody can be stored at 2°C-8°C for one month without detectable loss of activity. Antibody products are stable for twelve months from date of receipt when stored at -20°C to -80°C. Preservative-Free.

**Avoid repeated freeze-thaw cycles.**

**Formulation**  
Supplied as a 0.2um filtered solution in PBS with 0.05%ProClin 300,PH 7.8.

## Contact

 | [order@abclonal.com](mailto:order@abclonal.com)

 | [support@abclonal.com](mailto:support@abclonal.com)

 | [www.abclonal.com](http://www.abclonal.com)

## Background

Receptor for TNFSF5/CD40LG .Transduces TRAF6- and MAP3K8-mediated signals that activate ERK in macrophages and B cells, leading to induction of immunoglobulin secretion (By similarity).

## Immunogen Information

**Immunogen**  
Recombinant Human CD40

## Cross-Reactivity

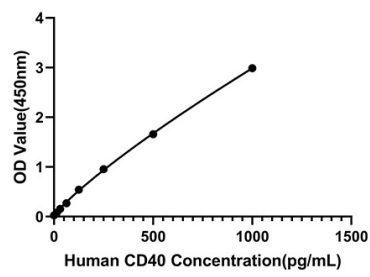
No cross-reactivity in ELISA assay with recombinant Human. sCD40L□Human.TNF R1

## Assay Applications

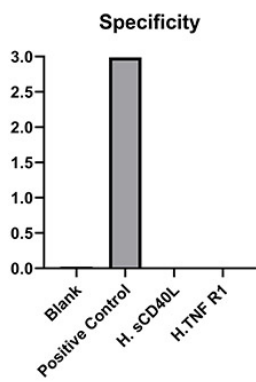
Human CD40 Sanwich ELISA Immunoassay

	Recommended Concentration	Sample
ELISA Capture	1-4ug/mL	Rabbit anti-Human CD40 (CAP)(Cat. No.RM17915)
ELISA Detection	0.025-0.00625ug/mL	Rabbit anti-Human CD40 (DET)(Cat. No.RM17916)
Standard	15.63-1000pg/mL	Recombinant Human CD40 Protein

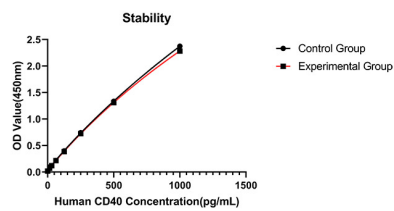
Validation Data



This standard curve is only for demonstration purposes. A standard curve should be generated for each assay.



No significant cross-reactivity or interference was observed.



Placed at 37°C for 3 days, the stability of the standard curve all conform to CV <10%.