

Rabbit anti-Human BD-1/beta-Defensin 1 mAb (CAP)

Catalog No.: RM17923

Basic Information

Catalog No.
RM17923

Catagory
Elisa Antibody Kit

Application
ELISA

Product Information

Ig Type
Rabbit IgG


Purification
Affinity purification

Endotoxin Level

Storage
Store at -20°C. Avoid freeze / thaw cycles. Preservative[]0.05%ProClin 300.
Avoid repeated freeze-thaw cycles.

Formulation
Supplied as a 0.2um filtered solution in PBS with 0.05%ProClin 300,PH 7.4.

Contact

 | order@abclonal.com

 | support@abclonal.com

 | www.abclonal.com

Background

Defensins form a family of microbicidal and cytotoxic peptides made by neutrophils. Members of the defensin family are highly similar in protein sequence. This gene encodes defensin, beta 1, an antimicrobial peptide implicated in the resistance of epithelial surfaces to microbial colonization. This gene maps in close proximity to defensin family member, defensin, alpha 1 and has been implicated in the pathogenesis of cystic fibrosis.

Immunogen Information

Immunogen
Recombinant Human BD-1/beta-Defensin 1

Cross-Reactivity

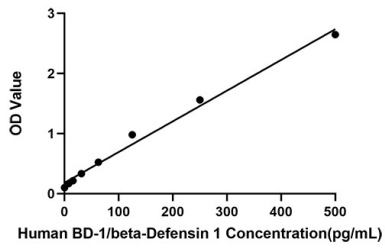
/

Assay Applications

Human BD-1/beta-Defensin 1 Sandwich ELISA Immunoassay

	Recommended Concentration	Sample
ELISA Capture	0.5-2ug/mL	Rabbit anti-Human BD-1/beta-Defensin 1 mAb(CAP)(Cat. No.RM17923)
ELISA Detection	0.006-0.0.025ug/mL	Rabbit anti-Human BD-1/beta-Defensin 1 mAb(DET)(Cat. No.RM17924)
Standard	7.81-500pg/mL	Recombinant Human BD-1/beta-Defensin 1 Protein

Validation Data



This standard curve is only for demonstration purposes. A standard curve should be generated for each assay.