

Rabbit anti-Human BD-1/beta-Defensin 1 mAb (DET)

Catalog No.: RM17924

Basic Information

Catalog No.
RM17924

Catagory
Elisa Antibody Kit

Application
ELISA

Product Information

Ig Type
Rabbit IgG

Purification
Affinity purification


Endotoxin Level


Storage
This antibody can be stored at 2°C-8°C for one month without detectable loss of activity. Antibody products are stable for twelve months from date of receipt when stored at -20°C to -80°C. Preservative-Free.


Avoid repeated freeze-thaw cycles.

Formulation
Supplied as a 0.2µm filtered solution in PBS with 0.05% ProClin 300, PH 7.8.

Contact

 | order@abclonal.com

 | support@abclonal.com

 | www.abclonal.com

Background

Defensins (alpha and beta) are cationic peptides with a broad spectrum of antimicrobial activity that comprise an important arm of the innate immune system. The α -defensins are distinguished from the β -defensins by the pairing of their three disulfide bonds. To date, four human β -defensins have been identified; BD-1, BD-2, BD-3 and BD-4. β -defensins are expressed on some leukocytes and at epithelial surfaces. In addition to their direct antimicrobial activities, they are chemoattractant towards immature dendritic cells and memory T cells. The β -defensin proteins are expressed as the C-terminal portion of precursors and are released by proteolytic cleavage of a signal sequence and, in the case of BD-1 (36 a.a.), a propeptide region. β -defensins contain a six-cysteine motif that forms three intra-molecular disulfide bonds. β -Defensins are 3-5 kDa peptides ranging in size from 33-47 amino acid residues.

Immunogen Information

Immunogen
Recombinant Human BD-1/beta-Defensin 1

Cross-Reactivity

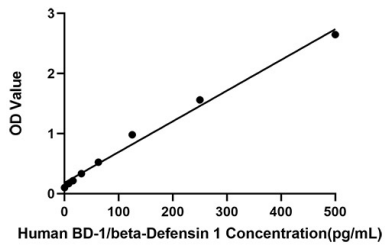
/

Assay Applications

Human BD-1 Sanwich ELISA Immunoassay

	Recommended Concentration	Sample
ELISA Capture	0.5-2µg/mL	Rabbit anti-Human BD-1 mAb(CAP)(Cat. No.RM17923)
ELISA Detection	0.006-0.0.025µg/mL	Rabbit anti-Human BD-1 mAb(DET)(Cat. No.RM17924)
Standard	15.63-1000pg/mL	Recombinant Mouse IL-10 Protein

Validation Data



This standard curve is only for demonstration purposes. A standard curve should be generated for each assay.