

Rabbit anti-Human IL-12/IL-23 p40 mAb (CAP)

Catalog No.: RM17931

Basic Information

Catalog No.
RM17931

Category
Elisa Antibody Kit

Application
ELISA

Product Information

Ig Type
Rabbit IgG

Purification
Affinity purification


Endotoxin Level


Storage
This antibody can be stored at 2°C-8°C for one month without detectable loss of activity. Antibody products are stable for twelve months from date of receipt when stored at -20°C to -80°C. Preservative-Free.

Avoid repeated freeze-thaw cycles.

Formulation
Supplied as a 0.2um filtered solution in PBS with 0.05%ProClin 300,PH 7.8.

Contact

 | order@abclonal.com

 | support@abclonal.com

 | www.abclonal.com

Background

ytokine that can act as a growth factor for activated T and NK cells, enhance the lytic activity of NK/lymphokine-activated killer cells, and stimulate the production of IFN-gamma by resting PBMC. IL-23 may constitute with IL-17 an acute response to infection in peripheral tissues. IL-23 binds to a heterodimeric receptor complex composed of IL12RB1 and IL23R, activates the Jak-Stat signaling cascade, stimulates memory rather than naive T-cells and promotes production of pro-inflammatory cytokines. IL-23 induces autoimmune inflammation and thus may be responsible for autoimmune inflammatory diseases and may be important for tumorigenesis.

Immunogen Information

Immunogen
Recombinant Human IL-12/IL-23 p40

Cross-Reactivity

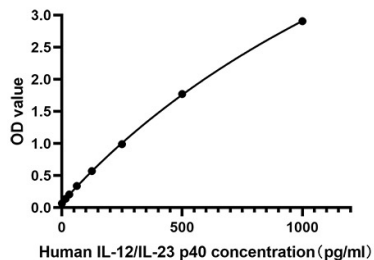
No cross-reactivity in ELISA assay with recombinant Mouse IFN- γ , Mouse IFN- β , Mouse IL-20, Mouse IL-22, Mouse IL-24, Human IL-10. Has cross-reactivity in ELISA with Rat IL-10.

Assay Applications

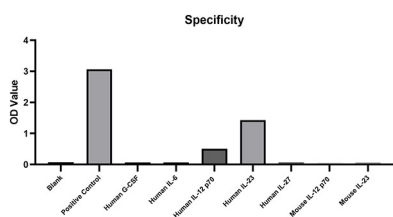
Human IL-12/IL-23 p40 Sandwich ELISA Immunoassay

	Recommended Concentration	Sample
ELISA Capture	1-4ug/mL	Rabbit anti-Human IL-12/IL-23 p40(CAP)(Cat. No.RM17931)
ELISA Detection	0.05-0.2ug/mL	Rabbit anti-Human IL-12/IL-23 p40 (DET)(Cat. No.RM17932)
Standard	15.62-1000pg/mL	Human IL-12/IL-23 p40 Protein

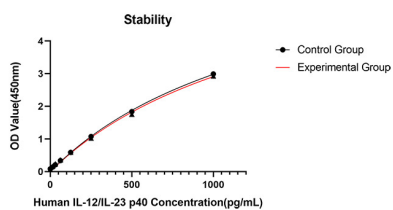
Validation Data



This standard curve is only for demonstration purposes. A standard curve should be generated for each assay.



No significant cross-reactivity or interference was observed.



Placed at 37°C for 3 days, the stability of the standard curve all conform to CV <10%.