

Rabbit anti-Human LILRB1 mAb (CAP)

Catalog No.: RM17933

Basic Information

Catalog No.
RM17933

Category
Elisa Antibody Kit

Application
ELISA

Product Information

Ig Type
Rabbit IgG


Purification
Affinity purification


Endotoxin Level

Storage
This antibody can be stored at 2°C-8°C for one month without detectable loss of activity. Antibody products are stable for twelve months from date of receipt when stored at -20°C to -80°C.
Preservative □ 0.05% ProClin 300.
Avoid repeated freeze-thaw cycles.

Formulation
Supplied as a 0.2µm filtered solution in PBS with 0.05% ProClin 300, PH 7.4.

Contact

 | order@abclonal.com

 | support@abclonal.com

 | www.abclonal.com

Background

Immunogen Information

Immunogen
Recombinant Human LILRB1

Cross-Reactivity

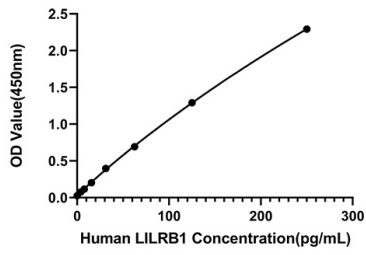
/

Assay Applications

Human LILRB1 Sandwich ELISA Immunoassay

	Recommended Concentration	Sample
ELISA Capture	1-4µg/mL	Rabbit anti-Human LILRB1 (CAP)(Cat. No.RM17933)
ELISA Detection	0.1-0.025µg/mL	Rabbit anti-Human LILRB1 (DET)(Cat. No.RM17934)
Standard	3.91-250pg/mL	Recombinant Human LILRB1 Protein(Cat. No.RP01331)

Validation Data



This standard curve is only for demonstration purposes. A standard curve should be generated for each assay.