

Rabbit anti-Mouse IL-10 mAb (DET)

Catalog No.: RM17936

Basic Information

Catalog No.
RM17936

Catagory
Elisa Antibody Kit

Application
ELISA

Product Information

Ig Type
Rabbit IgG


Purification
Affinity purification


Endotoxin Level

Storage
Store at -20°C. Avoid freeze / thaw cycles. Preservative 0.05%ProClin 300.
Avoid repeated freeze-thaw cycles.

Formulation
Supplied as a 0.2um filtered solution in PBS with 0.05%ProClin 300,PH 7.4.

Contact

 | order@abclonal.com

 | support@abclonal.com

 | www.abclonal.com

Background

This gene encodes an anti-inflammatory cytokine that is a member of the class-2 cytokine family. The encoded protein is secreted by cells of both the innate and adaptive immune systems and is crucial for limiting the immune response to a broad range of pathogens. It also has been shown to suppress autoimmune responses. This protein mediates its immunosuppressive signal through a specific interleukin 10 receptor complex. Aberrant functioning of this gene is associated with numerous immune disorders including graft-versus-host disease, and increased susceptibility to HIV-1 infection and rheumatoid arthritis.

Immunogen Information

Immunogen
Recombinant Mouse IL-10

Cross-Reactivity

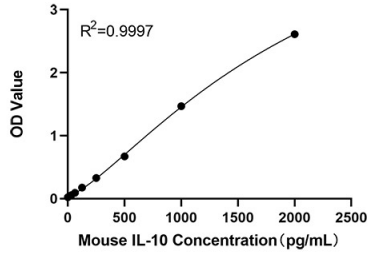
No cross-reactivity in ELISA assay with recombinant Mouse IFN- γ □ Mouse IFN- β □ Mouse IL-20 □ Mouse IL-22 □ Mouse IL-24 □ Human IL-10
Has cross-reactivity in ELISA with Rat IL-10

Assay Applications

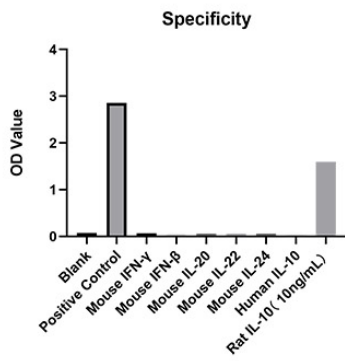
Mouse IL-10 Sandwich ELISA Immunoassay

	Recommended Concentration	Sample
ELISA Capture	0.5-2ug/mL	Rabbit anti-Mouse IL-10 mAb(CAP)(Cat. No.RM17935)
ELISA Detection	0.015-0.06ug/mL	Rabbit anti-Mouse IL-10 mAb(DET)(Cat. No.RM17936)
Standard	31.25-2000pg/mL	Recombinant Mouse IL-10 Protein(Cat. No.RP01465)

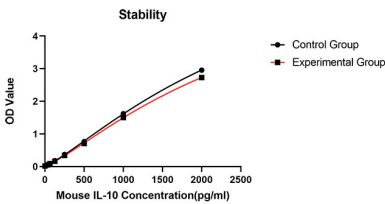
Validation Data



This standard curve is only for demonstration purposes. A standard curve should be generated for each assay.



No significant cross-reactivity or interference was observed.



Placed at 37°C for 3 days, the stability of the standard curve all conform to CV <10%.