

Rabbit anti-Mouse MCP-1 mAb (CAP)

Catalog No.: RM17937

Basic Information

Catalog No.
RM17937

Category
Elisa Antibody Kit

Application
ELISA

Product Information

Ig Type
Rabbit IgG


Purification
Affinity purification

Endotoxin Level

Storage
Store at -20°C. Avoid freeze / thaw cycles. Preservative 0.05%ProClin 300.
Avoid repeated freeze-thaw cycles.

Formulation
Supplied as a 0.2um filtered solution in PBS with 0.05%ProClin 300,PH 7.4.

Contact

 | order@abclonal.com

 | support@abclonal.com

 | www.abclonal.com

Background

Immunogen Information

Immunogen
Recombinant Mouse MCP-1

Cross-Reactivity

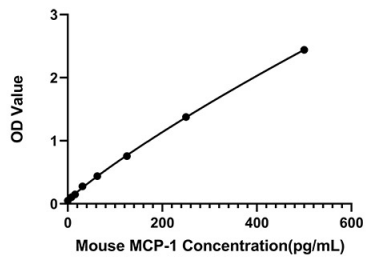
No cross-reactivity in ELISA assay with recombinant Human MCP-1

Assay Applications

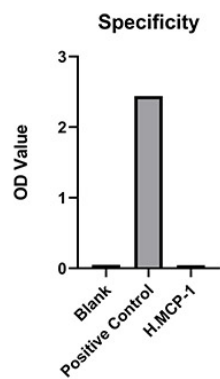
Mouse MCP-1 Sandwich ELISA Immunoassay

	Recommended Concentration	Sample
ELISA Capture	1-4ug/mL	Rabbit anti-Mouse MCP-1 (CAP)(Cat. No.RM17937)
ELISA Detection	0.25-0.0625ug/mL	Rabbit anti-Mouse MCP-1 (DET)(Cat. No.RM17938)
Standard	7.81-500pg/mL	Recombinant Mouse MCP-1 Protein(Cat. No.RP01607)

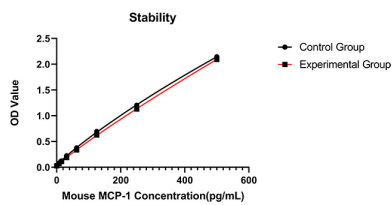
Validation Data



This standard curve is only for demonstration purposes. A standard curve should be generated for each assay.



No significant cross-reactivity or interference was observed.



Placed at 37°C for 3 days, the stability of the standard curve all conform to CV <10%.