

# Rabbit anti-Mouse MCP-1 mAb (DET)

**Catalog No.: RM17938**

## Basic Information

**Catalog No.**

RM17938

**Category**

Elisa Antibody Kit

**Application**

ELISA

## Product Information

**Ig Type**

Rabbit IgG

**Purification**

Affinity purification

**Endotoxin Level**

**Storage**


Store at -20°C. Avoid freeze / thaw cycles. Preservative 0.05%ProClin 300.


**Avoid repeated freeze-thaw cycles.**

**Formulation**

Supplied as a 0.2um filtered solution in PBS with 0.05%ProClin 300,PH 7.4.

## Contact

 | [order@abclonal.com](mailto:order@abclonal.com)

 | [support@abclonal.com](mailto:support@abclonal.com)

 | [www.abclonal.com](http://www.abclonal.com)

## Background

## Immunogen Information

**Immunogen**

Recombinant Mouse MCP-1

## Cross-Reactivity

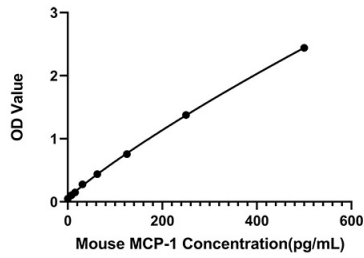
No cross-reactivity in ELISA assay with recombinant Human MCP-1

## Assay Applications

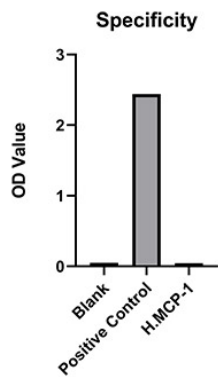
Mouse MCP-1 Sandwich ELISA Immunoassay

	Recommended Concentration	Sample
ELISA Capture	1-4ug/mL	Rabbit anti-Mouse MCP-1 (CAP)(Cat. No.RM17937)
ELISA Detection	0.25-0.0625ug/mL	Rabbit anti-Mouse MCP-1 (DET)(Cat. No.RM17938)
Standard	7.81-500pg/mL	Recombinant Mouse MCP-1 Protein(Cat. No.RP01607)

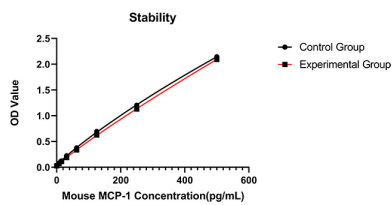
## Validation Data



This standard curve is only for demonstration purposes. A standard curve should be generated for each assay.



No significant cross-reactivity or interference was observed.



Placed at 37°C for 3 days, the stability of the standard curve all conform to CV <10%.